

IAHR 2009 Post Congress Technical Tour
Restoration of the Dungeness and Elwha Rivers
Olympic Peninsula, Washington, USA

Date: Saturday, August 15 to Monday, August 17

Technical Tour Ticket Price: \$450.00 USD

Come see the largest planned dam removal project in
North America!

This technical tour will depart from Seattle, Washington on Saturday, August 15 in the morning. The tour will visit the cities of Seattle, Sequim, and Port Angeles, Washington with field trips to the Dungeness and Elwha Rivers, Olympic National Park, Jamestown S'Klallam Tribe, and the Lower Elwha Klallam Tribe. The tour will conclude in Seattle, Washington on Monday, August 17.

Dungeness River Restoration Project

Learn about restoration projects such as the lengthening of bridge spans, levee setbacks, placement of large woody debris, natural channel designs, and estuary channel enhancement.

The 32-mile long Dungeness River begins high in the Olympic Mountains near Mystery Mountain and flows into Dungeness Bay and the Strait of Juan de Fuca near the City of Sequim, Washington. The National Wildlife Refuge at the river mouth includes the famous 9-km long Dungeness Spit and Lighthouse. The watershed is home to several salmon species. The population of pink salmon is entirely native wild stock with no hatchery influence.



Views of Dungeness River watershed from the mouth upstream into the Olympic Mountains. (Photograph courtesy of Dungeness River Management Team)

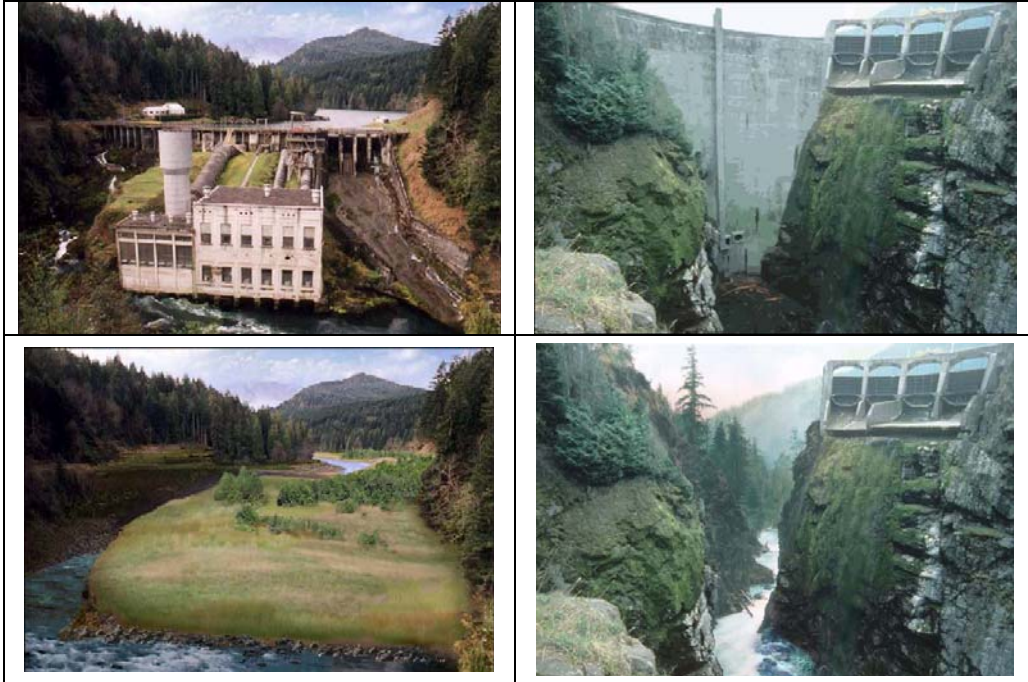
We will be visiting the Dungeness River and Spit with the Jamestown Skallam Tribe where active restoration is underway to restore river processes to improve river, floodplain, and coastal processes and salmon habitat. Participants will learn how scientists worked collaboratively with the watershed management team to identify and prioritize restoration actions.

Elwha River Restoration Project

Learn about the Planned Removal of Elwha and Glines Canyon Dams to nearly restore a complete watershed. These will be the largest dam removals in North America

The upper portions of the Elwha River watershed are within the boundaries of Olympic National Park near Port Angeles, Washington. The watershed is well known for its lush vegetation and spectacular views of mountains and streams. Fishery scientists believe the Elwha River once supported 10 different runs of anadromous fish and countless wildlife species that depended on the salmon for food. However, the river was dammed in 1913 and again in 1927 leaving only 8 km of river available for salmon runs.

This tour will provide a unique opportunity to see how scientists and resource managers are planning for the removal of two large dams in an adaptive management framework. The trip will explore how 16 million m³ of reservoir sediment will be managed through river erosion, controlled increments of dam removal, and an adaptive management monitoring program. Participants will also get a first hand look at the challenges in balancing restoration goals with downstream water and land use needs along with scenic some stops along the watershed.



Current views Elwha and Glines Canyon Dams with an artist's perception of the sites following dam removal. (Photographs courtesy of NPS)

Technical Tour Itinerary

Friday, August 14, 2009: Travel to Seattle, Washington

- Arrive at Seattle-Tacoma airport hotel Seattle, Washington
Recommended Hotels:

Hilton Seattle Airport and Conference Center
17620 International Boulevard
Seattle WA, 98188
Ph: 206.244.4800

Note: The tour bus will pick-up participants at this hotel. If you are staying at another hotel, it is your responsibility to be at this hotel 15 minutes prior to departure time. If staying in Washington State after the tour, the bus will drop participants back at this hotel. If you will be traveling back after the tour, the bus will drop you off at the airport.

Seattle Airport Doubletree Hotel
18740 International Boulevard
Seattle WA, 98188
Ph: 206.246.8600

Note: The tour bus will pick-up participants at this hotel. If you are staying at another hotel, it is your responsibility to be at this hotel 15 minutes prior to departure time. If staying in Washington State after the tour, the bus will drop participants back at this hotel. If you will be traveling back after the tour, the bus will drop you off at the airport.

Note: Participants will be expected to make their own travel arrangements to Seattle. **Costs associated with travel arrangements are not included in the tour ticket price.**

Saturday, August 15, 2009: Dungeness River Restoration

- 9:00 AM Depart Seattle-Tacoma airport hotel for Sequim, Washington
- 12:00 PM Box lunch at Dungeness River Railroad Bridge Park
(Restrooms available) (Lunch is included with tour ticket price)
- 1:00 PM Field tour of Dungeness River geomorphology at Railroad Bridge Park
- 2:00 PM Field tour of river restoration projects from Schoolhouse Bridge
- 4:00 PM Field tour of Dungeness Spit
(Entrance fee included in tour ticket price) (Restrooms available)
- 6:00 PM Travel to Port Angeles, WA Red Lion Hotel (Newly Renovated)

Port Angeles Red Lion Hotel

221 N. Lincoln
Port Angeles, WA 98362
Phone: 360-452-9215

Note: 3 day/2 nights.

Government Per Diem Rate: \$158.00 per room/per night.

Non Government Rate: \$179.00 per room/per night for a room with a waterfront view; \$129.00 per room/per night without a water-front view which is said to be fine.

Note: Rates are subject to change. Expenses are not covered in the tour ticket price.

Participants will be expected to make their own housing reservations. Costs associated with travel arrangements are not included in the tour ticket price.

7:00 PM No host dinner in Port Angeles, WA
Note: Transportation will be provided to Bushwhacker Restaurant

***Sunday, August 16, 2009: Elwha River Restoration
(Removal of Two Dams)***

9:00 AM Depart Red Lion Hotel for field tour of Olympic National Park, Hurricane Ridge (27 km each way) with views of the Elwha River Watershed (Restrooms available)

12:00 PM Box lunch at Olympic National Park Visitor Center
(Lunch is included with tour ticket price)

1:00 PM Field tour of Glines Canyon Dam and Historic Ranger District
(Restrooms available at Altaire Campground near entrance station to park)

2:30 PM Field tour of Elwha Dam

4:00 PM Field of tour Elwha River water diversion and treatment facilities

5:00 PM Lower Elwha Klallam Tribal reservation

- Presentations by Tribe
- \$15.00-\$20.00 per person Salmon dinner

7:00 PM Port Angeles, WA (Red Lion Hotel)

Monday, August 17, 2009: Travel to Seattle, Washington

9:00 AM Depart Red Lion Hotel, Port Angeles, Washington

12:00 PM Box lunch, public park in Poulsbo, Washington
(Lunch is included with tour ticket price)

1:00 PM Arrive at the Seattle-Tacoma Airport, Washington for
participants to board flights to other destinations.

Note: Participants will be expected to make their own travel arrangements to their final destination. Costs associated with travel arrangements are not included in the tour ticket price.

Important Items to Know

Please note, in addition to the ticket, the participant is responsible for personal travel expenses inclusive of:

- Travel expenses on Friday, August 14th from Vancouver to Seattle.
- Hotel of choice at Seattle-Tacoma Airport Hotel. (prices range from \$75 - \$100/night, plus taxes).
- Hotel in Port Angeles, WA (Red Lion Hotel was suggested, rates are currently \$159).
- Breakfast on Saturday, Sunday and Monday.
- Dinner on Saturday and Sunday (a salmon dinner for \$15.00-\$20.00).
- Travel expenses on Monday, August 17th from Seattle to your final destination.

Air travel and housing arrangements are the responsibility of the registrant.

- We regret that we will not be able to offer letters of invitation to assist you in obtaining visas from Canada to Olympic Peninsula, Washington, USA, as this tour is not an official part of the IAHR Congress.
- The motor coaches being used to transport participants are luxurious ultra modern equipment (not older than 3 years) with highly efficient engines, burning Bio-fuel where available. These coaches have a much lower carbon footprint than most coaches available in the Puget Sound area, helping keep our beautiful environment beautiful. They of course also feature air conditioning, bathroom, video and PA system.
- All fees quoted are in US Dollar.
- Beverages will be provided daily to include water and soft drinks as well as snacks.

- Box lunches will be provided as referenced above and may include something like a nice chicken sandwich with avocado, blue cheese, bacon (we can remove if pork is an issue), tomatoes and lettuce, Tim's Cascade Chips, fruit, cookie, and a small bottle of water and towelette, mustard and mayonnaise.

- Clothing to bring
 - Weather in August is typically sunny, but bring a light rain jacket
 - The weather at some field trip stops may be cool (4 to 15 °C) and breezy.
 - Comfortable clothes for walking and sturdy shoes or boots for walking