

YOU'RE INVITED TO THE PREMIER EVENT FOR SMART TRANSIT!



12TH INTERNATIONAL CONFERENCE ON
AUTOMATED PEOPLE MOVERS

MAY 31 – JUNE 3, 2009 >> SHERATON ATLANTA, ATLANTA, GA, USA



CONNECTING PEOPLE



CONNECTING PLACES



CONNECTING MODES—APMs

Earn up to 19 PDHs!

Register by April 24 to save \$100!



PRELIMINARY PROGRAM



CONFERENCE STEERING COMMITTEE

Conference Co-Chairs

Bob Griebenow, P.E., S.E., M.ASCE
Berger/ABAM Engineers, Inc.

Hal Lindsey, M.ASCE
Lea+Elliott, Inc.

Technical Program and Proceedings Chair

Bob Griebenow, P.E., S.E., M.ASCE
Berger/ABAM Engineers, Inc.

Airport Experiences—

Emerging Issues & Innovations

Chair: Larry Smith, P.E., F.ASCE
Airports and APM Consultant

Urban Metro Applications—

The World View

Chair: Janice Li, P.E.
Lea+Elliott, Inc.

Major Activity Centers—

Making the Connection

Chair: William Sproule, Ph.D., P.E., F.ASCE,
Michigan Tech University

People Mover System Developments—

What is New

Chair: Martin Lowson
Advanced Transport Systems Ltd.

People Mover System Improvements—

Learning from Experience

Chair: J. Sam Lott, P.E., M.ASCE
Kimley-Horn and Assoc.

ASCE Conference Staff

Jonathan C. Esslinger, P.E., F.ASCE
Transportation & Development Institute Director

Debra Tucker, CMP
Conference Manager

Andrea Baker
Transportation & Development Institute Manager

Joanna Colbourne
Sponsorships and Foundation
Development Coordinator

Sean M. Scully
Exhibit Sales Manager

EXPERIENCE ATLANTA

Atlanta is a city rich with history and culture—and known as the city not too busy to care. It is often cited as an example of successful urban development and growth. Evidence can be seen everywhere from the skyscrapers that fill downtown to the many prosperous restaurants, shops and businesses spread throughout the city.



The world's busiest airport, Atlanta's Hartsfield-Jackson International Airport, is served by MARTA's rapid transit system and the most heavily traveled airport APM. A new landside APM is under construction at the airport and another is planned on the airside.

50 Things to Do in Atlanta—Atlanta is for snootie foodies, sports fanatics, fashionistas, nature lovers and even bohemian hipsters.

- | | |
|--|--|
| 1 Atlanta Ballet | 29 Golf in Atlanta |
| 2 Atlanta Botanical Garden | 30 The Gone With the Wind Experience |
| 3 Atlanta Braves at Turner Field | 31 A New High Museum of Art for Atlanta |
| 4 Atlanta Civil War History | 32 Imagine It! The Children's Museum of Atlanta |
| 5 Atlanta Falcons at the Georgia Dome | 33 Jimmy Carter Library and Museum |
| 6 Atlanta Hawks and Atlanta Thrashers at Philips Arena | 34 Marietta Historic District |
| 7 Atlanta History Center | 35 Martin Luther King Jr. National Historic Site and Sweet Auburn District |
| 8 Atlanta Motor Sports | 36 Midtown, The Heart of the Arts. |
| 9 Atlanta Opera | 37 NEW World of Coca-Cola |
| 10 Atlanta Symphony Orchestra and Chastain Park Amphitheatre | 38 Piedmont Park |
| 11 Atlanta University Center and the Historic West End | 39 Roswell Historic District |
| 12 Atlanta Walking Tours | 40 School's in for Culture |
| 13 Atlantic Station | 41 City Segway Tours |
| 14 Discounts Galore | 42 Shop Until You Drop |
| 15 See a Broadway Show | 43 Six Flags Over Georgia & Six Flags White Water |
| 16 Buckhead, A Luxurious Experience | 44 Stone Mountain Park |
| 17 Centennial Olympic Park | 45 Find Theater at its Best |
| 18 Center for Puppetry Arts | 46 Underground Atlanta |
| 19 Chattahoochee River Fun | 47 Virginia-Highland |
| 20 Chateau Élan Winery & Resort | 48 William Berman Jewish Heritage Museum |
| 21 City of Decatur | 49 Yellow River Game Ranch and Kangaroo Conservation Center |
| 22 Inside CNN Studio Tour | 50 Zoo Atlanta |
| 23 Dine Out | |
| 24 Let's Do Downtown Year Round | |
| 25 Fernbank Museum of Natural History | |
| 26 Festivals Galore | |
| 27 The Georgia Aquarium | |
| 28 Georgia's History Under the Gold Dome | |

For more information, visit

www.atlanta.net.



CONTENTS

Conference Steering Committee	2	Technical Program.....	6-11
ASCE Conference Staff.....	2	Conference Cooperating Organizations	7
Experience Atlanta.....	2	Conference Sponsors	7
Your Invitation from the Co-Chairs.....	3	Conference Details.....	12
APM09 Schedule-At-A-Glance	3	Hotel Information.....	13
Special Events/Workshop Schedule	4	Exhibits	14
Program	4-5	Conference Registration.....	14-15



YOUR INVITATION FROM THE CO-CHAIRS



Bob Griebenow

On behalf of the organizing committee, we invite you to participate in the **12th International Conference on Automated People Movers** being held in Atlanta, Georgia, USA on **May 31– June 3, 2009**.



Hal Lindsey



The conference theme, **“Connecting People, Connecting Places, Connecting Modes—APMs”** reflects the conference’s focus on APMs and driverless transit systems as connectors for people, places and modes in cities, airports and private developments. Around the world automation in transit is accepted as safer and less costly than manual operation. Full automation has been applied to a wide range of transit technologies, from rapid transit systems to small circulator systems. APMs have matured, and this conference will explore the experience and lessons learned from past projects and new technologies in development.

Past conferences—held around the globe—have built international participation and flavor. Previous APM conferences have been held in Miami, Florida (1985 and 1989); Yokohama, Japan (1991); Irving, Texas (1993); Paris, France (1996); Las Vegas, Nevada (1997); Copenhagen, Denmark (1999); San Francisco, California (2001); Singapore (2003); Orlando, Florida (2005); and Vienna, Austria (2007).

This conference has become the meeting place of APM and automated transit professionals worldwide to share recent project experience, advanced technologies, and innovative ideas on planning, design, implementation, and operation of fully automated systems. Conference attendees include transportation planners and engineers, APM and transit system owners and operators, government officials, system suppliers, and prospective owners.

The technical program is composed of concurrent technical and plenary sessions—presenting the opportunity to learn of new developments and advances in automated transit and lessons learned from others who have planned, designed and constructed automated transit systems. There will also be a technical tour of the APM systems at Hartsfield-Jackson Atlanta International Airport along with workshops to help advance your professional development. Attending the technical program allows you to obtain professional development hours (PDHs) that can be used to show your commitment to maintaining your competency to licensing boards. In addition to the technical portions of the conference, there will also be time to interact with suppliers of equipment and services in the Exposition and network with peers at meals and breaks.

We look forward to having you join us in Atlanta on May 31-June 3, 2009 for APM09!

 
Bob Griebenow & Hal Lindsey
 Conference Co-Chairs

SCHEDULE-AT-A-GLANCE

(Subject to Change)

Sunday, May 31, 2009

12:00 pm – 6:00 pm	Registration
6:00 pm – 7:30 pm	Icebreaker Reception
6:00 pm – 7:30 pm	Exhibit Hall Open

Monday, June 1, 2009

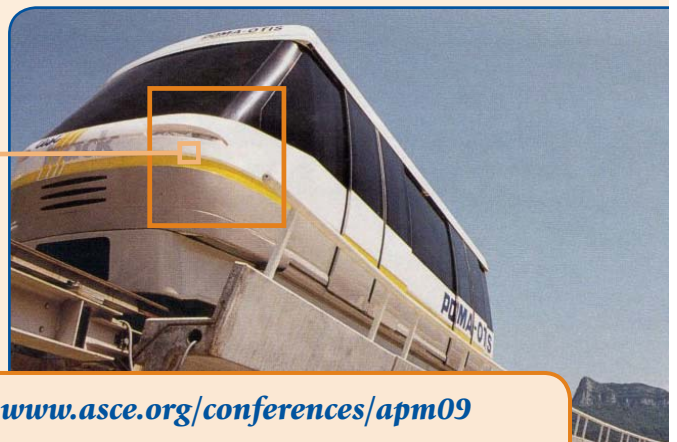
7:00 am – 4:00 pm	Registration
8:30 am – 10:00 am	Conference Welcome and Opening Session
10:00 am – 4:00 pm	Exhibit Hall Open
10:00 am – 10:30 am	Coffee Break in Exhibit Hall
10:30 am – 12:00 pm	Concurrent Technical Sessions
12:00 pm – 1:30 pm	Lunch in Exhibit Hall
1:30 pm – 3:00 pm	Concurrent Technical Sessions
3:00 pm – 3:30 pm	Refreshment Break in Exhibit Hall
3:30 pm – 5:00 pm	Concurrent Technical Sessions
6:00 pm – 9:30 pm	Lea+Elliott, Inc. Dinner Reception

Tuesday, June 2, 2009

7:00 am – 2:00 pm	Registration
8:30 am – 10:00 am	Concurrent Technical Sessions
10:00 am – 1:30 pm	Exhibit Hall Open
10:00 am – 10:30 am	Coffee Break in Exhibit Hall
10:30 am – 12:00 pm	Concurrent Technical Sessions
12:00 pm – 1:30 pm	Lunch in Exhibit Hall
1:30 pm – 5:00 pm	Automated People Mover Tours

Wednesday, June 3, 2009

7:00 am – 3:00 pm	Registration
8:30 am – 10:00 am	Concurrent Technical Sessions
10:00 am – 10:30 am	Coffee Break
10:30 am – 12:00 pm	Concurrent Technical Sessions
12:00 pm – 1:30 pm	Closing Lunch
2:00 pm – 5:00 pm	Post-Conference Workshop



For up-to-date Conference details and on-line registration visit: www.asce.org/conferences/apm09

SPECIAL EVENTS

Monday, June 1, 2009

6:00 pm – 9:30 pm

Lea+Elliott, Inc. Dinner Reception

Every four years, we look forward to the Monday night networking event hosted by Lea+Elliott, Inc. It is a great opportunity to re-unite with old friends and get to know new friends and business associates. This year, we will travel a short distance to Buckhead (uptown Atlanta) for a Low Country Barbecue dinner and fine refreshments at the SweetWater Brewing Company. Lea+Elliott is pleased to invite all registered conference attendees to join us for this event along with one guest.

Sponsored by *Lea+Elliott*

WORKSHOP SCHEDULE

Wednesday, June 3, 2009

2:00 pm – 5:00 pm

APM Benefits

Beyond Alignment and Costs: Identifying and Measuring the Operational, Economic and Environmental Benefits of APMs

This post-conference workshop will explore the reasons APM are worth building. A rich packet of information will be the start of presentations, case studies and interactive exercises that will assist designers, engineers and analysts planners in developing projects that get built. Lawrence J. Fabian of Trans.21—a well recognized source on planning information on APMs worldwide—will lead the three-hour workshop, but be prepared by bringing your thinking cap and creative imagination. Fabian has a long track record in the APM conference series with successful post-conference workshops at the last three of them. Learn more about his practice at www.airfront.us.

Registration Fee: \$295
Limited to 15 registrations

PROGRAM

Subject to change

Sunday, May 31, 2009

Icebreaker Reception

6:00 pm – 7:30 pm

Greet old friends and meet new friends in the industry at this casual get-together. Network and share ideas that will be useful to advance your career and business. Cool your heels with a tasty morsel and refreshing beverage. **Included for Full & Student Registrants.**

Additional Tickets: \$60

Sponsored by Sumitomo Corp



Monday, June 1, 2009

Plenary Session:

8:30 am – 10:00 am

Conference Welcome & Opening Session

Plan to attend the opening session of the 12th International Conference on Automated People Movers.

Opening Remarks; Hal Lindsey, M.ASCE, Lea+Elliott, Inc.; Bob Griebenow, P.E., S.E., M.ASCE, Berger/ABAM Engineers; Matthew M. McDole, P.E., M.ASCE, President, T&DI

Somewhere in Time— A History of Automated People Movers;

William Sproule, Ph.D., P.E., F.ASCE, Michigan Technological University

Defining the Right Roles for Automated Guideway Transit;

Hal Lindsey, M.ASCE, Lea+Elliott, Inc.

Urban Mass Transit Goes Driverless; Gerard Yelloz, Siemens

Transportation Systems

Exhibit Hall Open

10:00 am – 4:00 pm

Refreshments in Exhibit Hall

10:00 am – 10:30 am

Panel Discussion—APMs in Airports

10:30 am – 12:00 pm

Invited speakers include:

- Tampa Airport – Louis Miller
- Dallas/Fort Worth Airport – Jeff Fegan
- Atlanta Airport – Ben DeCosta
- Houston Airport – Rich Vacar



Lunch in the Exhibit Hall

12:00 pm – 1:30 pm

Included for Full, Student and Monday Daily Registrants.

Additional Tickets: \$50

Monday, June 1, 2009

Technical Sessions

1:30 pm – 3:00 pm
See page 6 for details

Refreshments in Exhibit Hall

3:00 pm – 3:30 pm

Technical Sessions

3:30 pm – 5:00 pm
See page 7 for details

Lea+Elliott, Inc. Dinner Reception

6:00 pm – 9:30 pm

Every four years we look forward to the Monday night networking event hosted by Lea+Elliott, Inc. It is a great opportunity to re-unite with old friends and get to know new friends and business associates. This year we will travel a short distance to Buckhead (uptown Atlanta) for a Low Country Barbecue dinner and fine refreshments at the SweetWater Brewing Company. Lea+Elliott is pleased to invite all registered conference attendees to join us for this event along with one guest.

Sponsored by **Lea+Elliott**

Tuesday, June 2, 2009

Technical Sessions

8:30 am – 10:00 am
See page 8 for details.

Exhibit Hall Open

10:00 am – 1:30 pm

Refreshments in Exhibit Hall

10:00 am – 10:30 am

Technical Sessions

10:30 am – 12:00 Noon
See page 9 for details.

Lunch in the Exhibit Hall

12:00 pm – 1:30 pm

Included for Full, Student and Tuesday Daily Registrants.
Additional Tickets: \$50

Technical Tour: Atlanta Airport

1:30 pm – 5:00 pm

Tickets: \$10

Explore the APM at the Hartsfield-Jackson Atlanta International Airport.

Sponsored by Sumitomo Corp

Wednesday, June 3, 2009

Technical Sessions

8:30 am – 10:00 am
See page 10 for details

Refreshment Break

10:00 am – 10:30 am

Technical Sessions

10:30 am – 12:00 pm
See page 11 for details

Closing Lunch & Panel Discussion— Future of APMs

12:00 pm – 1:30 pm

Join us for lunch and the opportunity to applaud those judged to have provided the “Best Papers and/or Presentations” of the Conference. After they receive their awards, we will commence the panel discussion moderated by Harley Moore, BSCE, MSCE, Lea+Elliott, Inc.

Tickets: \$35

Post-Conference Workshop

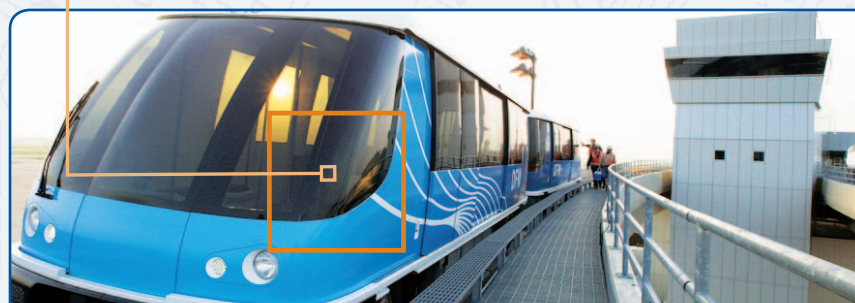
2:00 pm – 5:00 pm

APM Benefits—Beyond Alignment and Costs: Identifying and Measuring the Operational, Economic and Environmental Benefits of APMs

This post-conference workshop will explore the reasons APM are worth building. A rich packet of information will be the start of presentations, case studies and interactive exercises that will assist designers, engineers and analysts planners in developing projects that get built. Lawrence J. Fabian of Trans.21—a well recognized source on planning information on APMs worldwide—will lead the three-hour workshop, but be prepared by bringing your thinking cap and creative imagination. Fabian has a long track record in the APM conference series with successful post-conference workshops at the last three of them. Learn more about his practice at www.airfront.us.

Registration Fee: \$295

Limited to 15 registrations



TECHNICAL PROGRAM

Subject to change

Monday, June 1, 2009

8:30 am – 10:00 am Plenary Session: Conference Welcome & Opening
 10:00 am – 10:30 am Refreshment Break in the Exhibit Hall
 10:30 am – 12:00 pm Panel Discussion – APMs in Airports
 12:00 pm – 1:30 pm Lunch in the Exhibit Hall



1:30 pm – 3:00 pm Technical Session 1

Track 1	Airport Experiences	Track 2	Urban Metro Applications	Track 3	Major Activity Centers	Track 4	New System Developments	Track 5	System Improvements
	<p>Airport Experiences</p> <p>New Doha International Airport APM, Building an APM in a Terminal Building <i>Steve Beebe, Lea+Elliott, Inc. Jackie Yang, AICP, Lea+Elliott, Inc.</i></p> <p>Harley Moore, BSCE, MSCE, Lea+Elliott, Inc.</p> <p>The Dallas Love Field People Mover Connector <i>Terry Mitchell, Aviation Department, City of Dallas Scott Kutchins, P.E., Lea+Elliott, Inc.</i></p> <p>An APM that Allows, and Maybe Portends, the Future <i>Jenny Baumgartner, P.E., AICP, Lea+Elliott, Inc. Harley Moore, Lea+Elliott, Inc.</i></p>	<p>Urban System Automation</p> <p>Driverless Systems: Consideration on Design and Implementation <i>Gerard Yelloz, Rail Automation, Siemens</i></p> <p>Simulation Analysis of APM Systems for Application in Dense Urban Environments <i>J. Sam Lott, P.E., Houston—Transit/TPTO, Kimley-Horn and Associates, Inc.</i></p> <p>Status of the Driverless Circle Line “CityRing” Project, Copenhagen <i>Gunni S. Frederikson, The Metro Company</i></p> <p>Deploying SelTrac CBTC to the World’s Longest Driverless System – Dubai’s Red & Green Lines <i>Mircea Georgescu, Thales Rail Signaling Solutions</i></p>	<p>New Connectivity Concepts</p> <p>Sustainability, PRT and Parking <i>Shannon Sanders McDonald, Architecture, Morgan State University</i></p> <p>Personal Rapid Transit’s Impact on Army Base Sustainability <i>Peter Muller, P.E., PRT Consulting, Inc.</i></p> <p>APM Application in Freight Transportation <i>Albert W. Hartkorn, Transit Safety Consulting Services Bob Griebenow, P.E., S.E., M.ASCE, Berger/ABAM Engineers</i></p>			<p>Vehicle Improvements</p> <p>An Enhanced Bombardier CX-100 APM Vehicle <i>Jack Galanko, Bombardier Transportation- Systems Division</i></p> <p>Scott Moore, Bombardier Transportation- Systems Division</p> <p>Advanced Composite Carbody Systems <i>Takaomi Inaba, Structural Strength Department, Research Laboratory, IHI Corporation</i></p> <p>Tsutomu Hoshii, Transportation Systems Department, Logistics and Structures, IHI Corporation</p> <p>Masaaki Kuwabara, Transportation Systems Department, Logistics and Structures, IHI Corporation</p> <p>Seung-Cheol Lee, Hankuk Fiber Glass Co., Ltd.</p> <p>Dae-Hwan Kim, Hankuk Fiber Glass Co., Ltd.</p> <p>Kwang-Bok Shin, Division of Mechanical Eng., Hanbat National University</p> <p>Hee-Young Ko, Division of Mechanical Eng., Hanbat National University</p> <p>APM Vehicle Structural Analysis – Codes and Realities <i>Thomas Narbeshuber, Doppelmayr Cable Car Dieter Jussel, Doppelmayr Cable Car</i></p> <p>Advances in Passenger Convenience and Comfort <i>Kumihito Tatecho, Transportation Systems Department, Logistics and Structures, IHI Corporation</i></p> <p>Motoaki Tanaka, Transportation Systems Department, Logistics and Structures, IHI Corporation</p> <p>Masafumi Kawai, Numerical Engineering Department, Research Laboratory, IHI Corporation</p> <p>Yuji Koike, Structural Strength Department, Research</p>			

3:00 pm – 3:30 pm – Refreshment Break in the Exhibit Hall

Monday, June 1, 2009



3:30 pm – 5:00 pm

Technical Session 2

Track 1	Airport Experiences	Track 2	Urban Metro Applications	Track 3	Major Activity Centers	Track 4	New System Developments	Track 5	System Improvements	
<p>Atlanta Hartsfield Airport</p> <p>APM Systems – The Key to Atlanta Airport Expansion <i>John Kapala, International Aviation Consultants</i></p> <p>Expanding the APM System at Atlanta Airport <i>Gregory Adams, Projects, Bombardier Transportation</i></p> <p><i>Frank Jeffers, Engineering, Bombardier Transportation</i></p> <p><i>Thomas Sheakley, Engineering, Bombardier Transportation</i></p> <p>Atlanta Airport APM Expansion—East Terminal Integration <i>Sambit Bhattacharjee, P.E., Lea+Elliott, Inc.</i></p> <p><i>Rod Falvey, P.E., Lea+Elliott, Inc.</i></p> <p><i>Denise Burlison, Lea+Elliott, Inc.</i></p> <p><i>John Kapala, HJ Development Program Atlanta</i></p> <p><i>Mike Williams, Dept. of Aviation</i></p>		<p>APMs in Urban Settings</p> <p>Integrated Solutions of APM Operation Effectiveness <i>Mircea Georgescu, Thales Rail Signaling Solutions</i></p> <p>Guangzhou APM—First Urban APM in China <i>Alex Marton, Bombardier Transportation</i></p> <p>CityVAL <i>Mark Zuber, Siemens Transportation Systems</i></p> <p>Urban APM Systems <i>Bo Birk Pedersen, DCC Doppelmayr Cable Car</i></p>		<p>APM</p> <p>2009</p>		<p>PRT Systems Advancements</p> <p>Vectus PRT Concept and Test Track Experience <i>Jörgen Gustafsson, M.SC., M.B.A., Vectus Ltd.</i></p> <p>Introducing PRT to the Sustainable City <i>Robbert Lohmann, Marketing and Sales, 2getthere</i></p> <p><i>Luca Guala, Systematica</i></p> <p>Taxi2000 Status Update <i>David Maymudes, Taxi 2000</i></p>		<p>Guideway Improvements</p> <p>Guideway Design and Construction <i>Brian K. Adams, P.E., Heath & Lineback Engineers, Inc.</i></p> <p><i>John A. Heath, P.E., Heath & Lineback Engineers, Inc.</i></p> <p><i>Gary B. Lineback, P.E., Heath & Lineback Engineers, Inc.</i></p> <p>The Orlando Experience <i>Todd Mitchell, P.E., Structures, PB</i></p> <p>APM Guideways—The Need to Cost Less and Look Better <i>Bob Griebenow, P.E., S.E., M.ASCE, Berger/ABAM Engineers, Inc.</i></p> <p><i>Jim Fletcher, Parametrix</i></p> <p>How to Design a PRT Guideway <i>J. Edward Anderson, P.E., PRT International, LLC</i></p>		

6:00 pm – 9:30 pm

Lea+Elliott, Inc., Dinner Reception

CONFERENCE SPONSORS

as of 1/5/09

Excellence

Lea+Elliott, Inc., Dinner Reception *Lea+Elliott*
www.leaelliott.com

Bombardier Transportation **BOMBARDIER**
www.bombardier.com

Sumitomo Corporation, Icebreaker Reception, Technical Tours
www.sumitomocorp.com

Bronze

Advanced Transit Association, Registration Bags
www.advancedtransit.org

CONFERENCE COOPERATING ORGANIZATIONS

as of 1/5/09

Advanced Transit Association
Airports Council International




TECHNICAL PROGRAM

Tuesday, June 2, 2009

Subject to change

8:30 am – 10:00 am

Technical Session 3


Track 1	Airport Experiences	Track 2	Urban Metro Applications	Track 3	Major Activity Centers	Track 4	New System Developments	Track 5	System Improvements
	<p>Heathrow Airport Heathrow Terminal 5 Project <i>Glenn Morgan, BSME, CMU Bombardier Transportation</i></p> <p>An Update on the Progress of the Heathrow Airport PRT Project <i>David Holdcroft, BSc MBA, Heathrow Airport</i></p> <p>Heathrow PRT Guideway, Lessons Learned <i>Tony Kerr, BE, MSc, CEng, MICE, Civil Engineering, Ove Arup & Partners Ltd</i></p> <p><i>Rachel Oates, MEng, MICE, MIStructE, Civil Engineering, Ove Arup & Partners Ltd</i></p>	<p>APMs in Urban Settings Rubber Tired APM—A Better Solution for Honolulu Rapid Transit? <i>David Mori, BSME, MSEM, P.E., Jakes Associates, Inc.</i></p> <p>APM Feasibility Study for the Vienna Central Station Development Area <i>Heimo Krappinger, Chartered Engineering Consultant, Traffic and Transportation Department, AXIS Ingenieurleistungen</i></p> <p>Objectively Assessing Automatic vs. Manual Control for Transit Systems <i>John Joy, Lea+Elliott, Inc.</i></p>	<p>University Connections Introducing APMs into a University Curriculum <i>William Sproule, P.E., FASCE, Civil and Environmental Engineering, Michigan Tech University</i></p> <p><i>William Leder, P.E., FASCE, Civil and Environmental Engineering, Michigan Tech University</i></p> <p>California University of Pennsylvania Urban Maglev People Mover System <i>Thomas Riestler, Transportation, Mackin Engineering Company</i></p> <p>A Campus Transportation System for Michigan Tech <i>William Leder, P.E., FASCE, Civil and Environmental Engineering, Michigan Tech University</i></p> <p><i>William Sproule, P.E., FASCE, Civil and Environmental Engineering, Michigan Tech University</i></p> <p><i>Frank Baxandall, P.E., Civil and Environmental Engineering, Michigan Tech University</i></p>	 <p>APM 2009</p>		<p>Procurement Innovations, Technological Advances & Sustainability of the APM <i>Paul Trahey, P.E., Lea+Elliott, Inc.</i></p> <p>DBOM to DBFO: The Longer and More Winding Road <i>Elaine Cartwright, BSEE, Lea+Elliott, Inc.</i></p> <p><i>Thomas Dunscombe, CE, San Francisco BART</i></p> <p><i>Harley Moore, MSCE, MIT Lea+Elliott, Inc.</i></p> <p><i>John Kennedy, Lea+Elliott, Inc.</i></p> <p><i>Jackie Yang, AICP, UC Berkeley</i></p> <p>Specification Development for Successful Transit Procurement <i>Frank Culver, URS/WGI</i></p>			

10:00 am – 10:30 am

Refreshment Break in the Exhibit Hall



Tuesday, June 2, 2009

10:30 am – 12:00 pm		Technical Session 4							
Track 1	Airport Experiences	Track 2	Urban Metro Applications	Track 3	Major Activity Centers	Track 4	New System Developments	Track 5	System Improvements
<p>Miami International Airport</p> <p>MIA Mover Procurement Sanjeev Shah, P.E, M. ACSE, Lea+Elliott Inc. Larry Coleman, Lea+Elliott Inc. Margaret Hawkins Moss, Miami-Dade Aviation Dept. Franklin Stirrup, P.E., Miami-Dade Aviation Dept.</p> <p>Miami International Airport APM System: The MIC/MIA Connector Barbara M Schroeder, P.E., Rail & Transit Systems Division, PARSONS Kuangtzer "KT" Su, P.E., Rail & Transit Systems Division, PARSONS Thomas M Wilson, P.E., Rail & Transit Systems Division, PARSONS Franklin Stirrup, P.E. Miami-Dade Aviation Dept.</p>				<p>Connecting Activity Centers</p> <p>Implementing an APM for CITYCENTER—The New Vertical City in Las Vegas Huy Huynh, P.E. Lea+Elliott, Inc.</p> <p>Las Vegas People Mover Integration Potential Wayne Cottrell, Ph.D., P.E., Civil Engineering, California State Polytechnic University, Pomona</p> <p>PRT Case Study at Legends at Village West, Development Kansas City, Kansas Stanley Young, P.E., Center for Advanced Trans Tech, University of Maryland Peter Muller, P.E., PRT Consulting Moni El-Asaar, BG Consultants</p> <p>Planning and Procurement of an Urban People Mover System in Doha, West-Bay Kamel-Eddine Mokhtech, Ph. D., P.E., Lea+Elliott, Inc. Sanjeev Shah, P.E, M. ACSE, Lea+Elliott, Inc. Mustapha Al-Issa, P.E., MBA, Qatari Diar Real Estate Hassan Qaddoura, P.E., Qatari Diar Real Estate Hassan Eisa M. Al-Fadallah, Ph.D., Qatari Diar Real Estate</p>		<p>PRT Simulation</p> <p>Combining PRT Microsimulation with Demand Estimation David Maymudes, Taxi2000</p> <p>Innovative Simulation Tools for PRT and GRT Joerg Schweizer, Dr., Institute of Transportation Engineering, University of Bologna Emiliano Traversi, Ing. DEIS, University of Bologna Antonio Danesi, Dr., Institute of Transportation Engineering, University of Bologna</p> <p>Wireless Communication Based Computer Simulator to Assess PRT Operational Scenarios Jun-Ho Lee, Train Control communication Research, Korea Railroad Research Institute Yong-Kyu Kim, Korea Railroad Research Institute</p> <p>Ridesharing in the ULTra Personal Rapid Transit System John Lees-Miller, BSc, Advanced Transport Systems John Hammersley, Ph.D., MPhys, Advanced Transport Systems Nicholas Davenport, MEng, Advanced Transport Systems</p>		<p>Financing</p> <p>Project Funding Opportunities Sanjeev Shah, P.E, M. ACSE, Lea+Elliott Inc. Larry Coleman, Lea+Elliott Inc.</p> <p>Financing Transit Usage with Podcars in 59 Swedish Cities Göran Tegnér, M.Sc.Econ, Analysis & Strategy, WSP Group Elisabet Idar Angelov, M.Sc. Econ, Analysis & Strategy, WSP</p> <p>APM Impact on Real Estate Value David Little, Lea+Elliott Inc.</p>	

12:00 pm – 1:30 pm

Lunch in the Exhibit Hall

1:30 pm – 5:00 pm


APM Site Tours—Hartsfield-Jackson Atlanta International Airport, Sponsored by Sumitomo Corp



TECHNICAL PROGRAM

Wednesday, June 3, 2009

Subject to change

8:30 am – 10:00 am					Technical Session 5					
Track 1	Airport Experiences	Track 2	Urban Metro Applications	Track 3	Major Activity Centers	Track 4	New System Developments	Track 5	System Improvements	
<p>Airport O&M</p> <p>Operations and Maintenance at Atlanta Airport <i>Jerome Page, MBA, Bombardier</i> <i>Melvin Redd, Bombardier</i> <i>Russell Woodley, Bombardier</i></p> <p>DFW Skylink: Tracking Success <i>David Taliaferro, BBA, Energy & Transportation Mgmt., Dallas Fort Worth Int'l Airport</i></p> <p>O'Hare ATS—The Teenage Years <i>Dennis Gary, P.E., Ph.D., Chicago, Rail Transit, AECOM Technical Services</i> <i>Mark Piltingsrud, AIA, Chicago Airports, Earth Tech</i></p> <p>Deploying the "Light" SelTrac CBTC Solution at Dulles International Airport APM <i>Scott VanHorn, Thales Rail Signaling Solutions</i></p>		<p>System Safety</p> <p>Evolving Clark County APM Code Requirements <i>David Mori, BSME, MSEM, P.E., Jakes Associates, Inc.</i> <i>Eric Troy, BSME, JAI</i></p> <p>Standardization of High Capacity PRT <i>Raymond MacDonald, P.E., Transportation, 21st Century PRT</i></p> <p>IEC 62267 – A Safety Standard for Driverless Systems <i>Anselme Cote, RATP</i></p>		 <p>APM 2009</p>		<p>PRT System Innovations</p> <p>Extending PRT Capabilities <i>Ingmar Andreasson, LogistikCentrum</i></p> <p>Integration of Guided Cabin Systems (GCS) in Cities, Regardless of Their Size <i>Ortfried Friedreich, Traffic and Transportation Department, AXIS Ingenieurleistungen</i></p> <p>PRT Circulator for Pleasanton <i>Steve Raney, Advanced Transport Systems</i></p> <p>Open-Guideway Personal Rapid Transit Station Options <i>Peter Muller, P.E., PRT Consulting, Inc</i></p>		<p>Power Improvements</p> <p>Analyzing Rail Potential Rise and Leakage Current in DC Traction Power Supply <i>Yungsam Kwon, Korea Railway Research Institute Ragyo Jeong, Korea Railway Research Institute</i></p> <p>Sanggi Chung, Electric Railway Research Dept., Korea Railway Research Institute</p> <p>Samyoung Kwon, Electric Railway Research Dept., Korea Railway Research Institute</p> <p>Hosung Jung, Electric Railway Research Dept., Korea Railway Research Institute</p> <p>Design and Economic Considerations for Power Rail <i>Kevin Jensen, Conductix</i></p> <p>Linear Motor Propulsion for Automated People Movers <i>Richard Thornton, ScD, Engineering Management, MagneMotion Inc.</i> <i>Tracy Clark, ScD, Engineering, MagneMotion Inc.</i> <i>Brian Perreault, Ph.D., Engineering, MagneMotion Inc.</i> <i>Jim Wieler, MS, Engineering, MagneMotion Inc.</i></p> <p>Energy Efficient APM <i>Masaya Mitake, Mitsubishi Heavy Industries</i> <i>Hiroshi Ogawa, P.E., M.ASCE, M.JSME, Mitsubishi Heavy Industries</i> <i>Katsuaki Morita, Mitsubishi Heavy Industries</i></p>		

10:00 am – 10:30 am

Refreshment Break



Wednesday, June 3, 2009

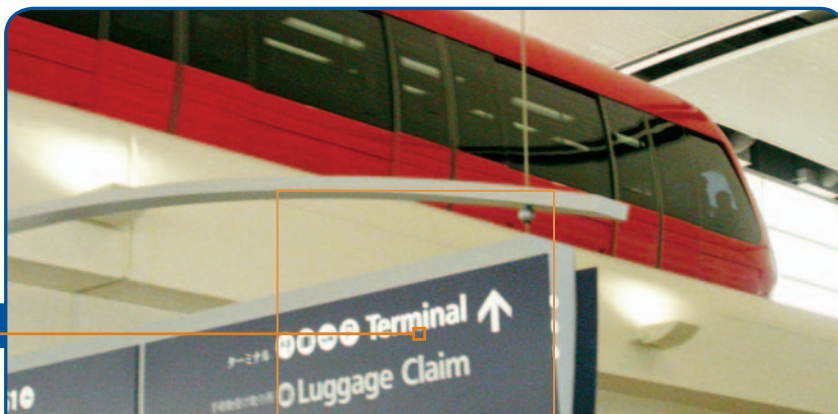
10:30 am – 12:00 pm		Technical Session 6								
Track 1	Airport Experiences	Track 2	Urban Metro Applications	Track 3	Major Activity Centers	Track 4	New System Developments	Track 5	System Improvements	
Airport APM Documentation ACI/NA TRB/ACRP Projects Moderator: Larry Smith, P.E., Chair, ASCE APM Standards Committee Panelists: Dick Marchi, Technical Affairs, ACI.NA Larry Goldstein, Senior Program Advisor, TRB/ACRP David Little, ACRP Project Leaders, Lea+Elliott, Inc. Brenda Hargrove, ACRP Project Leader, TransSolutions		Converting to Driverless Operation Automation of Existing Metro Lines – The Case of RATP Line 1 Paris Gerald Churchill, RATP A Flexible Turnkey Platform Concept for Metros of Future Bertrand Picard, ENSTA, STS TK, Siemens Transportation Systems NYCT Communication Based Train Control Implementation – The Way Forward Edwin A. Mortlock, PARSONS Nidhish Patel, New York City Transit		APM Standards Overview APM Standards Overview Security—William Hathaway Emergency Preparedness—William Leder System Verification and Demonstration—Charles Elms Operations, Maintenance and Training—William Showalter Operational Monitoring—Diane Morse		Advanced System Technologies Operating Record and Recent Developments of HSST Hitashi Motoyama, MSME, Mitsubishi Heavy Industries Market Trends and Comparative Study of Economic and Technological Parameters of APM Systems Eduardo Todt, Universidade Federal do Paraná Álvaro Leão, Pontifícia Universidade Católica do Rio Grande do Sul Luis Lindau, Universidade Federal do Rio Grande do Sul Edgar Bortolini, Pontifícia Universidade Católica do Rio Grande do Sul Brenda Pereira, Universidade Federal do Rio Grande do Sul Development Status of the General Atomics Urban Maglev System Sam Gurol, Electromagnetic Systems Division, General Atomics		Operation Improvements System Demonstration: Preparing for Success Matthew Sturgell, P.E., Lea+Elliott, Inc. Optimizing APM Failure-Mode Capacities James Green, P.E., DMJM Aviation New Technology Integration for Older System Technologies Steven M. Castaneda, BSME, P.E., JAI Airside 1,3 Running Surface Rehabilitation for Orlando International Airport Sambit Bhattacharjee, P.E., Lea+Elliott, Inc. Daniel McFadden, P.E., Lea+Elliott, Inc. Tuan Nguyen, P.E., Engineering and Construction, Greater Orlando Airport Authority		

12:00 pm – 1:30 pm

Closing Lunch and Panel Discussion—Future of APMs

2:00 pm – 5:00 pm

Post-Conference Workshop – APM Benefits—Beyond Alignment and Costs: Identifying and Measuring the Operational, Economic and Environmental Benefits of APMs
 See page 4 for details.



CONFERENCE DETAILS

Earn Valuable Continuing Professional Development Hours (PDHs)

You may earn up to 19 professional development hours (PDHs), nationally recognized units of record, by attending APM09 technical sessions. Your on-site registration packet will contain detailed information about ASCE's voluntary Continuing Professional Development Program.

Please note that there are differences from state to state in continuing education requirements for professional engineering licensure. Each state registration board has the final authority to approve course, credits, professional development hours per course, and other methods of earning credit in that state. ASCE strongly recommends that individuals check regularly with their state registration boards for specific continuing education requirements that affect professional engineering licensure and the ability to renew licensure in their jurisdictions.

Speaker/Moderator Registration

All speakers and session moderators are required to register in advance for the conference and pay appropriate registration fees (see page 15 for the registration form). Onsite, all speakers and moderators should check in at the conference registration desk to pick up badges and tickets.

A speakers' room will operate at the hotel beginning at 7:00 am on Monday, June 1, and be available for the duration of the conference. Speakers and moderators must confirm all audio-visual equipment requirements in advance with conference staff. This should be done online at www.asce.org/conferences/apm09. Speakers who are making computer-generated presentations must bring their own computers or arrange with the session moderator to share a computer. ASCE is unable to provide computers for use during the technical sessions.

Conference Proceedings

Conference proceedings will be provided to full conference registrants. Proceedings include a book of abstracts and a CD with full text of all papers. Additional copies may be purchased following the conference by calling ASCE at 800-548-2723 or 703-295-6300 or ordering on-line at www.pubs.asce.org.

International Travel Tips & Local Customs

International Travel Tips: A valid passport and visas are required of most visitors to the United States. Attendees should check with their local consulates or embassies. If a letter of invitation from ASCE is required to secure a visa, please e-mail your request (including full name as it appears on your passport and address) to Debby Tucker at DTuckerCMP@aol.com. According to policy, ASCE cannot intervene with the embassy or e-mail or express mail letters of invitation. To expedite your letter of invitation, ASCE will use fax (please include your fax number) and air mail.

- U.S. Department of State provides information on traveling to the United States regarding passports, international travel and such. Its Web site is accessible via http://travel.state.gov/visa/temp/types/types_1264.html.

- If you are unable to obtain a Visa, cancellations must be received in writing at ASCE Headquarters by May 4, 2009. A \$50 Processing fee will be deducted from all refunds. No refunds will be made for cancellations received after May 4, 2009.
- ASCE recommends you apply for your visa at least 30 days prior to your conference travel dates. ASCE cannot refund registration fees after the registration cutoff date due to an individual's inability to obtain a visa. Please file your paperwork as far in advance as possible in order to be eligible for a refund prior to the registration cutoff date if needed.

Local Customs: Service charges or tips are generally not included in published prices in the United States. Restaurant servers, taxi drivers and such generally expect a tip of at 15 percent.

Smoking in public areas is usually prohibited in the United States. Smokers should seek out designated smoking areas in hotels, restaurants and other businesses.

Conference Dress

Business casual attire is appropriate for most APM09 events. Although jackets are not required for the sessions, they are advisable because conference rooms are typically cool.

Lunch and Refreshment Breaks

Refreshments breaks will be offered in the Exhibit Hall mid-morning on Monday and Tuesday and mid-afternoon on Monday.

Complimentary buffet lunches will be offered for full, student, and applicable day daily registrants in the Exhibit Hall on Monday and Tuesday.

A ticketed seated luncheon will be served on Wednesday featuring a panel discussion on the future of APMs. Tickets are required for this lunch for \$35 per person.

Car Rental Discount

Conference attendees may receive car rental discounts by contacting Hertz and providing the appropriate codes: Hertz 800-654-2220, www.Hertz.com. Codes: CDP# 11381 and PC# 945512.

Directions to the Conference Hotel

From East

Take Interstate 20 West to Interstate 75/Interstate 85 North. Continue on I-75/85 North to Exit 248C (International Boulevard). Turn left onto International Boulevard. The hotel entrance is 1.5 blocks ahead on the left.

From North

Take Interstate 75/Interstate 85 South to take Exit 249A (Courtland Street). Proceed 3 blocks on Courtland Street. The hotel entrance is on the left. From Hartsfield-Jackson Atlanta International Airport Take Interstate 85 North to Interstate 75/Interstate 85. Take Exit 248C (International Boulevard). Turn left onto International Boulevard continue to the hotel.

From West

Take Interstate 20 East to Interstate 75/Interstate 85 North. Continue on I-75/85 to Exit 248C (International Boulevard). Turn left onto International Boulevard. The hotel entrance is 1.5 blocks ahead on the left.

Information/Message Center

Messages for conference attendees may be placed through the Sheraton Atlanta Hotel at (404) 659-6500. Please ask for the APM09 registration desk.

Faxes to guests may be sent to: (404) 681-5306. Be sure to clearly indicate the attendee's full name on the cover sheet. If the attendee is not staying at the Sheraton Atlanta, write: "Please deliver to the APM09 Conference Registration Desk," on the cover sheet.

Shipments

Guests staying at the Sheraton Atlanta Hotel may ship materials to:

Sheraton Atlanta Hotel
165 Courtland St.
Atlanta, GA 30303

Materials must be clearly marked with the name of the guest followed by "Hold for Arrival" and arrival date.

HOTEL INFORMATION

Sheraton Atlanta Hotel

165 Courtland St.
Atlanta, GA 30303
(404) 659-6500
www.starwoodhotels.com

To make reservations, visit <http://www.starwoodmeeting.com/Book/asce09> or call 800-833-8624.

Be sure to indicate that you are attending the 12th International Automated People Movers Conference to reserve a room at the special conference rate.

Special Conference Rate: \$179.00 single/double (plus applicable taxes, currently 15 percent)

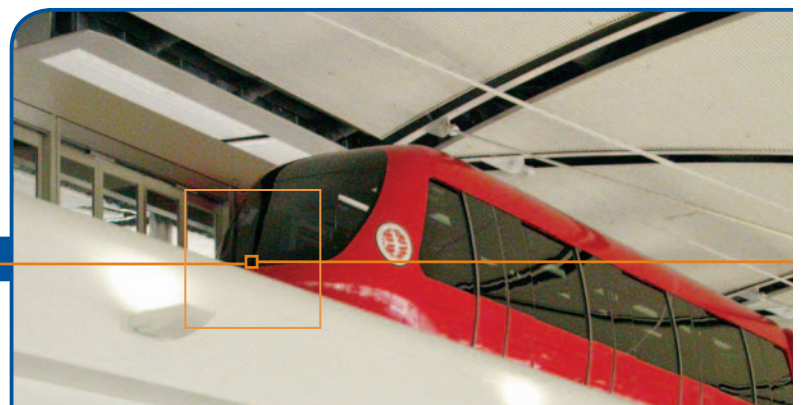
Reservations must be made by May 7, 2009 to guarantee the special conference rate.

Enjoy a warm welcome to the Peach State at the Sheraton Atlanta Hotel. Stroll out the doors and find yourself in the heart of Georgia's capital city, just minutes away from the Georgia World Congress Center, Georgia Aquarium, Philips Arena, Centennial Olympic Park, and the Georgia Dome. Settle in for a peaceful night in one of the hotel's 760 comfortable guest rooms and suites. Stay connected with the people who matter with cordless telephones and wireless high-speed Internet access, available in each room for a daily fee. Go for a relaxing swim in the garden courtyard pool with a fully retractable roof, or work up a sweat at the fitness center, open all day and night. Catch up with a colleague in Fandangles, the hotel's fine dining room and martini bar.

Hotel Amenities:

The Sheraton Atlanta provides the following services:

- 24-hour fitness facility
- Concierge desk
- Indoor/outdoor pool
- 24-hour front desk
- Luggage storage
- Doorman
- Laundry service
- Wheelchair access
- Express/video checkout available
- 24-hour security
- Safe deposit boxes
- 24-hour valet parking service (charge)
- Bellstand/porters
- High speed internet access in business center (charge)
- Wireless high speed internet access in all guest rooms (charge)
- Cash machine (ATM)
- The Sheraton sweet sleeper bed
- Wake-up service available
- Smoke detectors
- 24-hour room service
- Car rental service
- Whirlpool
- Business center/services
- Covered parking facilities
- Self-pay parking facilities



CONFERENCE REGISTRATION

Register for the conference online:

www.asce.org/conferences/apm09

Or by **fax** using the form (page 15): 301-983-6288

Or by **phone**: 301-983-6282

Or by **mail** using the form (page 15):

ASCE / APM09

P.O. Box 79668

Baltimore, MD 21279-0668 USA

Included in Your APM Registration Fee

	Proceedings	Technical Sessions	Exhibitions	Sunday Icebreaker Reception	Monday Exhibit Hall Lunch	Monday Lea+Elliott Dinner	Tuesday Exhibit Hall Lunch	Tuesday Technical Tours	Wednesday Closing Luncheon
Full Registration									
Member/ Non-Member/ Speaker/Moderator	•	•	•	•	•	•	•	\$10 ticket	\$35 ticket
Daily Registration									
* For Day of Registration									
Monday Only*		•	•		•	•			
Tuesday Only*		•	•			•	•	\$10 ticket	
Wednesday Only*		•							\$35 ticket
Student Registration		•	•	•	•	•	•	\$10 ticket	\$35 ticket



Conference Cancellations

Cancellations must be made in writing to ASCE by May 4, 2009, in order to receive a refund of the conference registration fee.

A \$50.00 processing fee will be deducted from the registration fee. Additional event tickets will be fully refunded, if cancelled in writing by May 4, 2009. Fax cancellation requests to 301-983-6288. No refunds will be made for cancellations received after May 4, 2009.

Special Services

If you require special assistance, please contact Debby Tucker, Conference Manager, at 301-983-6282 or email DTuckerCMP@aol.com no later than May 4, 2009.

EXHIBITS

See you in the Exhibit Hall!

Exhibits reflecting all areas of APM design, construction and operation will run throughout the conference to give you a look at leading edge suppliers and service providers to the industry and ideas for your projects and operations.

Current Exhibitors

as of 12/31/08

Advanced Transit Association
Bombardier Transportation
Burns Engineering Inc.
DCC Dopplemayr Cable Car
Hutchinson Worldwide
Lea+Elliott, Inc.
Sumitomo Corporation of America/
Mitsubishi Heavy Industries, Ltd.



Exhibit Hall Hours

Sunday, May 31, 2009, 6:00 pm –7:30 pm
6:00 pm –7:30 pm Ice Breaker Reception

Monday, June 1, 2009, 10:00 am–4:00 pm
10:00 am –10:30 am Coffee Break
12:00 pm –1:30 pm Lunch
3:00 pm –3:30 pm Refreshment Break

Tuesday, June 2, 2009, 10 am –1:30 pm
10:00 am –10:30 am Coffee Break
12:00 pm –1:30 pm Lunch

Reserve your booth in the APM09 Exhibit Hall!

Get your name among these distinguished exhibitors and before the most qualified decision-makers in the APM industry. Here you will gain maximum exposure with extended hours and special Exhibit Hall events.

To reserve your booth, contact Sean Scully at ASCE Sales: 703-295-6154 or sscully@asce.org



CONFERENCE REGISTRATION FORM

May 31–June 3, 2009 >> Sheraton Atlanta, Atlanta, GA, USA >> May 31–June 3, 2009

Last Name _____ First Name _____ MI _____

Name (for badge) _____ P.E. Yes No Ph.D. Yes No

Company _____ Title _____

Mailing Address _____

City _____ State _____ Zip _____

Country _____ Email _____

Phone _____

Membership (Check if appropriate) ASCE – Membership # _____
 Cooperating Organization – Name: _____

Please answer these questions so we may serve you better:

- The organization I work for is: Private, Consulting or Design/Build Firm Commercial or Industrial Firm Government
 Education Military Other
- My role or position: Partner/Principal Senior Manager Middle Manager Technical/Professional Staff Faculty
 Student Retired
- Number of APM Conferences I have attended, including this one: 0 1 2 3 or more
- My age group is: Under 25 25-34 35-49 50 – 65 Over 65
- I am: Male Female

CORPORATE DISCOUNT

When registering 4 or more persons, subtract \$50 from each registration fee. All registrations must be submitted by fax or mail at the same time and with the same form of payment to be eligible for this discount. This discount is not available online or by phone or for on-site or daily registrations.

Registration Fees (Check selections)

There is no charge for the Lea+Elliott, Inc. Dinner Reception.

However, each registrant and guest must pre-register, below, and present a ticket to attend the dinner and/or board the bus.*

	Early Bird By April 24	Advance April 25 – May 22	Onsite	Amount
<input type="checkbox"/> Full Registration (Includes all technical sessions, proceedings, exhibition, exhibit hall lunches, Icebreaker Reception and Dinner) (Dinner registration required, below.)				
Member ASCE or Cooperating Organizations	\$625	\$675	\$725	_____
Speaker / Moderator (Member/Non-Member)	\$625	\$675	\$725	_____
Non-Member — Includes a 1-Year Membership in T&DI.	\$775	\$835	\$875	_____
<input type="checkbox"/> Full-Time Student (Proof of full-time student status required) (Includes all technical sessions, exhibition, exhibit hall lunches, Icebreaker Reception and Dinner) (Dinner/Tour registration required, below.)				
	\$175	\$200	\$250	_____
<input type="checkbox"/> Daily Registration (check day[s]) <input type="checkbox"/> Mon. <input type="checkbox"/> Tues. <input type="checkbox"/> Wed.				
Monday and Tuesday include technical sessions, exhibition, and lunch for that day; Dinner (Dinner registration required, below). Wednesday includes technical sessions only.				
Member ASCE or Cooperating Organizations	\$325	\$325	\$295	_____
Speaker / Moderator (Member/Non-Member)	\$325	\$325	\$295	_____
Non-Member	\$400	\$400	\$325	_____

Workshop / Seminar

	Price Each	No. of Tickets	Amount
<input type="checkbox"/> Wednesday Post-Conference Workshop	\$295	_____	_____

Technical Tours

	Price Each	No. of Tickets	Amount
<input type="checkbox"/> Tuesday Technical Tour: Atlanta Airport	\$10	_____	_____

Additional Tickets

	Price Each	No. of Tickets	Amount
<input type="checkbox"/> Sunday Icebreaker Reception (Included in Full & Student Registrations)	\$60	_____	_____
<input type="checkbox"/> Monday Exhibit Hall Lunch (Included in Full & Monday-Daily Registrations)	\$50	_____	_____
<input type="checkbox"/> Monday Lea+Elliott, Inc. Dinner	No Charge	_____	_____
<input type="checkbox"/> Tuesday Exhibit Hall Lunch (Included in Full & Tuesday-Daily Registrations)	\$50	_____	_____
<input type="checkbox"/> Wednesday Closing Lunch	\$35	_____	_____

FOR EARLY BIRD REGISTRATION DISCOUNTS, REGISTER ONLINE, BY FAX, PHONE, OR MAIL BY APRIL 24, 2009.

GRAND TOTAL (pay this amount) _____

To pay registration by check, make check payable to ASCE/APM09 and mail with this form to: ASCE/APM09, PO Box 79668, Baltimore, MD 21279-0668 USA. Checks must be issued in U.S. dollars, drawn on U.S. banks. Registration must be accompanied by payment or copy of purchase order.

To pay registration by credit card, please complete this section:

AMEX VISA MC DISC DINERS Total to be charged \$ _____

Credit card number _____ Exp. date _____

Signature _____ Government P.O. # _____

DON'T MISS THE...



12TH INTERNATIONAL CONFERENCE ON AUTOMATED PEOPLE MOVERS

CONNECTING PEOPLE
CONNECTING PLACES
CONNECTING MODES—APMs

May 31- June 3, 2009 – Sheraton Atlanta

The Premier Bi-Annual Educational/
Networking Event for:

- Transportation Planning Professionals
- APM and Automated Rapid Transit Project Design & Implementation Consultants
- Vehicle & System Suppliers
- Private Developers & Architects
- Current & Prospective APM and Automated Rapid Transit Owners & Operators
- Educators

For conference details and online registration, visit

www.asce.org/conferences/apm09

CONFERENCE HIGHLIGHTS

More than 80 papers & presentations by industry authorities

3 days of Concurrent Technical Sessions in 5 Tracks:

- Airport Experiences—
Emerging Issues & Innovations
- Urban Metro Applications—
The World View
- Major Activity Centers—
Making the Connection
- System Developments—
What is New
- System Improvements—
Learning from Experience

Expert Panel Discussion

Post-Conference Workshop

Technical Tours: Hartsfield-Jackson
Atlanta International Airport

Exhibits



Transportation & Development Institute
of the American Society of Civil Engineers
1801 Alexander Bell Drive
Reston, VA 20191 4400