

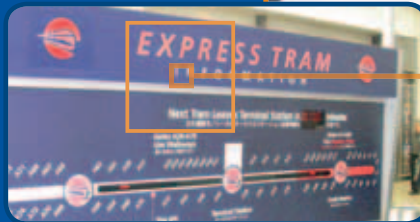
WELCOME TO THE PREMIER EVENT FOR SMART TRANSIT!



12TH INTERNATIONAL CONFERENCE ON
AUTOMATED PEOPLE MOVERS



CONNECTING PEOPLE



CONNECTING PLACES



CONNECTING MODES—APMs



*May 31-June 3, 2009
Westin Peachtree Plaza Hotel
Atlanta, Georgia*



OFFICIAL PROGRAM



Presented by the Transportation and Development Institute of the American Society of Civil Engineers

CONTENTS

Welcome to Atlanta.....	2
Special Event.....	2
Welcome from the Co-Chairs.....	3
Conference Steering Committee	3
ASCE Conference Staff.....	3
Exhibit Hall Floorplan.....	4
Exhibitors.....	4
Technical Program.....	5-11
Committee Meetings.....	12
Conference Details.....	12-13
Hotel Information & Map	14
Program-At-A-Glance	15
Conference Cooperating Organizations	16
Conference Sponsors	16

SPECIAL EVENT

Monday, June 1, 2009

6:00 pm – 9:30 pm

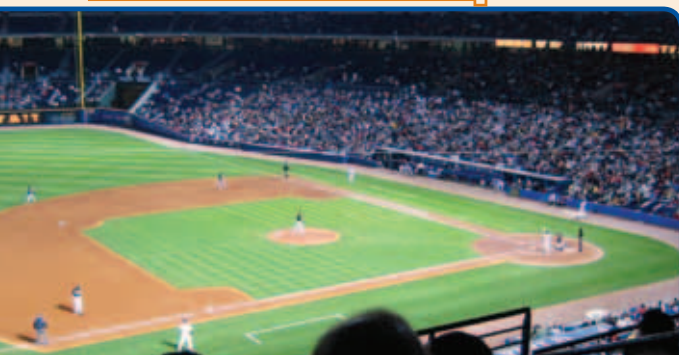
Transportation departs promptly from the Hotel Motor Entrance

Lea+Elliot, Inc. Dinner Reception

Every four years, we look forward to the Monday night networking event hosted by Lea+Elliot, Inc. It is a great opportunity to re-unite with old friends and get to know new friends and business associates. This year, we will travel a short distance to Buckhead (uptown Atlanta) for a Low Country Barbecue dinner and fine refreshments at the SweetWater Brewing Company. Lea+Elliot is pleased to invite all registered conference attendees to join us for this event along with one guest.

Sponsored by

Lea+Elliot



EXPERIENCE ATLANTA

Atlanta is a city rich with history and culture—and known as the city not too busy to care. It is often cited as an example of successful urban development and growth. Evidence can be seen everywhere from the skyscrapers that fill downtown to the many prosperous restaurants, shops and businesses spread throughout the city.



The world's busiest airport, Atlanta's Hartsfield-Jackson International Airport, is served by MARTA's rapid transit system and the most heavily traveled airport APM. A new landside APM is under construction at the airport and another is planned on the airside.

50 Things to Do in Atlanta—Atlanta is for snootie foodies, sports fanatics, fashionistas, nature lovers and even bohemian hipsters.

- | | |
|--|--|
| 1 Atlanta Ballet | 29 Golf in Atlanta |
| 2 Atlanta Botanical Garden | 30 The Gone With the Wind Experience |
| 3 Atlanta Braves at Turner Field | 31 A New High Museum of Art for Atlanta |
| 4 Atlanta Civil War History | 32 Imagine It! The Children's Museum of Atlanta |
| 5 Atlanta Falcons at the Georgia Dome | 33 Jimmy Carter Library and Museum |
| 6 Atlanta Hawks and Atlanta Thrashers at Philips Arena | 34 Marietta Historic District |
| 7 Atlanta History Center | 35 Martin Luther King Jr. National Historic Site and Sweet Auburn District |
| 8 Atlanta Motor Sports | 36 Midtown, The Heart of the Arts. |
| 9 Atlanta Opera | 37 NEW World of Coca-Cola |
| 10 Atlanta Symphony Orchestra and Chastain Park Amphitheatre | 38 Piedmont Park |
| 11 Atlanta University Center and the Historic West End | 39 Roswell Historic District |
| 12 Atlanta Walking Tours | 40 School's in for Culture |
| 13 Atlantic Station | 41 City Segway Tours |
| 14 Discounts Galore | 42 Shop Until You Drop |
| 15 See a Broadway Show | 43 Six Flags Over Georgia & Six Flags White Water |
| 16 Buckhead, A Luxurious Experience | 44 Stone Mountain Park |
| 17 Centennial Olympic Park | 45 Find Theater at its Best |
| 18 Center for Puppetry Arts | 46 Underground Atlanta |
| 19 Chattahoochee River Fun | 47 Virginia-Highland |
| 20 Chateau Élan Winery & Resort | 48 William Breman Jewish Heritage Museum |
| 21 City of Decatur | 49 Yellow River Game Ranch and Kangaroo Conservation Center |
| 22 Inside CNN Studio Tour | 50 Zoo Atlanta |
| 23 Dine Out | |
| 24 Let's Do Downtown Year Round | |
| 25 Fernbank Museum of Natural History | |
| 26 Festivals Galore | |
| 27 The Georgia Aquarium | |
| 28 Georgia's History Under the Gold Dome | |

For more information, visit

www.atlanta.net

WELCOME FROM THE CO-CHAIRS



Bob Griebenow

On behalf of the organizing committee, we welcome you to the 12th International Conference on Automated People Movers.



Hal Lindsey

The conference theme, “Connecting People, Connecting Places, Connecting Modes – APMs” reflects the conference’s focus on APMs and driverless transit systems as connectors for people, places and modes in cities, airports and private developments. Around the world automation in transit is accepted as safer and less costly than manual operation. Full automation has been applied to a wide range of transit technologies, from rapid transit systems to small circulator systems. APMs have matured, and this conference will explore the experience and lessons learned from past projects and new technologies in development.

Past conferences have been held around the globe as recognition that the conference has an international participation and flavor. Previous conferences have been held in Miami, Florida (1985 and 1989), Yokohama, Japan (1991), Irving, Texas (1993), Paris, France (1996), Las Vegas, Nevada, (1997), Copenhagen, Denmark (1999), San Francisco, California, (2001), Singapore (2003), Orlando, Florida (2005) and Vienna, Austria (2007).

This conference has become the meeting place of APM and automated transit professionals from around the world to share their recent project experience, advanced technologies, and innovative ideas on planning, design, implementation, and operation of fully automated systems. Conference attendees include transportation planners and engineers, APM and transit system owners and operators, government officials, system suppliers, and prospective owners.

Thank you for joining us in Atlanta for APM09!

Bob Griebenow & Hal Lindsey
Conference Co-Chairs

CONFERENCE STEERING COMMITTEE

Conference Co-Chairs

Bob Griebenow, P.E., S.E., M.ASCE
Berger/ABAM

Hal Lindsey, M.ASCE
Lea+Elliott, Inc.

Technical Program and Proceedings Chair

Bob Griebenow, P.E., S.E., M.ASCE
Berger/ABAM

**Airport Experiences—
Emerging Issues & Innovations**
Chair: Larry Smith, P.E., F.ASCE
Airports and APM Consultant

**Urban Metro Applications—
The World View**
Chair: Janice Li, P.E.
Lea+Elliott, Inc.

**Major Activity Centers—
Making the Connection**
Chair: William Sproule, Ph.D., P.E., F.ASCE,
Michigan Tech University

**People Mover System Developments—
What is New**
Chair: Martin Lowson
Advanced Transport Systems Ltd.

**People Mover System Improvements—
Learning from Experience**
Chair: J. Sam Lott, P.E., M.ASCE
Kimley-Horn and Associates

ASCE / TD&I Conference Staff
Jonathan C. Esslinger, P.E., F.ASCE
Director, Transportation & Development Institute

Debra Tucker, CMP
Conference Manager

Andrea Baker
Manager, Transportation & Development Institute

Joanna Colbourne
*Sponsorships and Foundation
Development Coordinator*

Sean M. Scully
Exhibit Sales Manager



EXHIBITS HOURS

Sunday, May 31, 2009, 6:00 pm –7:30 pm

6:00 pm –7:30 pm Ice Breaker Reception
 Sponsored by



SUMITOMO
 CORPORATION
 OF AMERICA



Monday, June 1, 2009, 10:00 am –4:00 pm

10:00 am –10:30 am Coffee Break

12:00 pm –1:30 pm Lunch
 Sponsored by

BOMBARDIER

3:00 pm –3:30 pm Refreshment Break

Tuesday, June 2, 2009, 10:00 am –1:30 pm

10:00 am –10:30 am Coffee Break

12:00 pm –1:30 pm Lunch
 Sponsored by



Exhibits

Atlanta Ballroom, 7th Floor

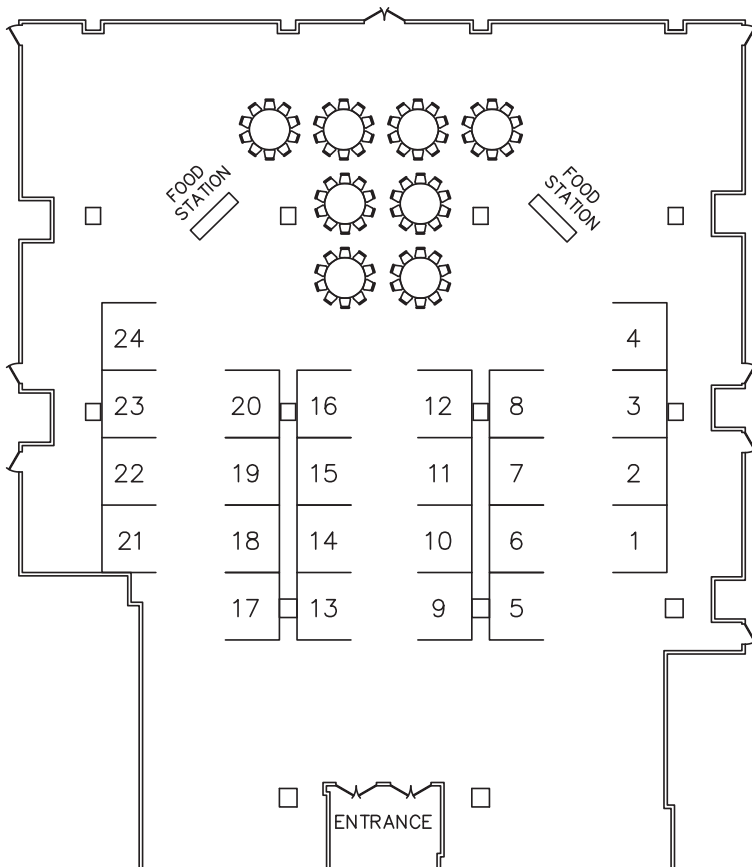
See you in the Exhibit Hall!

Exhibits reflecting all areas of APM design, construction and operation will run throughout the Conference to give you a look at leading edge suppliers and service providers to the industry and ideas for your projects and operations.

Current Exhibitors

(as of 5/19/09)

	Booth#
2getthere	16
Advanced Transit Association	17
Advanced Application Design, Inc	5
AMT.....	1
Bombardier Transportation	19 & 20
Burns Engineering Inc.....	21
Conductix-Wampfler.....	24
CWA Constructions SA/Corp	12
DCC Dopplemayr Cable Car.....	7 & 8
Hutchinson Industries	13
Lea+Elliott, Inc.	4
Leitner-Poma of America, Inc.....	22 & 23
RSCC Cable	14
Schwager Davis, Inc.....	3
Sumitomo Corporation of	9, 10 & 11
America & Mitsubishi Heavy Industries of America, Ltd.	
Sutrak Corporation	2
Systematica	15
Transportation & Development Institute...	18



CONFERENCE PROGRAM

Sunday, May 31, 2009

6:00 pm – 7:30 pm

Icebreaker Reception

Exhibit Hall, Atlanta Ballroom, 7th Floor

Greet old friends and meet new friends in the industry at this casual get-together. Network and share ideas that will be useful to advance your career and business. Cool your heels with a tasty morsel and refreshing beverage. **Included for Full & Student Registrants.**
Additional Tickets: \$60

Sponsored by



SUMITOMO
CORPORATION
OF AMERICA



Monday, June 1, 2009

7:30 am – 8:30 am

Continental Breakfast, *Peachtree Foyer, 8th Floor*

Sponsored by



8:30 am – 10:00 am

Plenary Session:

Peachtree Ballroom, 8th Floor

Conference Welcome & Opening Session

Plan to attend the opening session of the 12th International Conference on Automated People Movers.

Opening Remarks;

Hal Lindsey, M.ASCE, *Lea+Elliott, Inc.*

Bob Griebenow, P.E., S.E., M.ASCE, *Berger/ABAM*

Matthew M. McDole, P.E., M.ASCE, *President, T&DI*

Somewhere in Time— A History of Automated People Movers

William Sproule, Ph.D., P.E., F.ASCE,

Michigan Technological University

Defining the Right Roles for Automated Guideway Transit

Hal Lindsey, M.ASCE, *Lea+Elliott, Inc.*

Urban Mass Transit Goes Driverless

Gerard Yelloz, *Siemens Transportation Systems*

Awards for Outstanding Papers and Presentations

Authors who have presented papers of technical distinction, professional merit, and outstanding presentation quality will be recognized with APM09 certificates and monetary cash awards of \$500 per paper. The awards will be announced at the Opening Plenary Session. Only reviewed papers appearing in the proceedings will be eligible.

Paper/Presentation Awards sponsored by

BergerABAM, Conductix-Wampfler and CWA Constructions SA/Corp.



CONFERENCE PROGRAM

Subject to change

Monday, June 1, 2009

- 10:00 am – 4:00 pm **Exhibit Hall Open, Atlanta Ballroom, 7th Floor**
- 10:00 am – 10:30 am **Refreshments in Exhibit Hall, Atlanta Ballroom, 7th Floor**
- 10:30 am – 12:00 pm **Panel Discussion—APMs in Airports, Peachtree Ballroom, 8th Floor**
 Invited speakers include:
- Tampa Airport – Louis Miller
 - Dallas/Fort Worth Airport – Jeff Fegan
 - Atlanta Airport – Ben DeCosta (Invited)
 - Houston Airport – Rich Vacar
- 12:00 pm – 1:30 pm **Lunch in the Exhibit Hall, Atlanta Ballroom, 7th Floor**
 Included for Full, Student and Monday Daily Registrants.
 Additional Tickets: \$50
- Sponsored by **BOMBARDIER**



1:30 pm – 3:00 pm Concurrent Technical Session 1, Peachtree Ballroom, 8th Floor							
Track 1	Airport Experiences	Track 2	Urban Metro Applications	Track 3	Major Activity Centers	Track 4	System Improvements
Peachtree D		Peachtree C		Peachtree B		Peachtree E	
APMs in Airports Moderator: Sam Mayman <i>Gannett Fleming, Inc.</i> New Doha International Airport APM, Building an APM in a Terminal Building Steve Beebe Jackie Yang, AICP Harley Moore, BSCE, MSCE <i>Lea+Elliott, Inc.</i> The Dallas Love Field People Mover Connector Terry Mitchell Diego Rincon <i>Aviation Department, City of Dallas</i> Scott Kutchins, P.E. <i>Lea+Elliott, Inc.</i> The Sacramento International Airport APM Jenny Baumgartner, P.E., AICP Harley Moore, BSCE, MSCE <i>Lea+Elliott, Inc.</i> Landside APM Planning at Seattle-Tacoma International Airport Dave Tomber, AIA <i>Port of Seattle</i> Harley Moore <i>Lea+Elliott, Inc.</i> Bob Griebenow, P.E., S.E., M.ASCE <i>BergerABAM</i>		Urban System Automation Moderator: J. Sam Lott, P.E., M.ASCE <i>Kimley-Horn and Associates</i> Driverless Systems: Consideration on Design and Implementation Gerard Yelloz <i>Siemens Transportation Systems</i> Status of the Driverless Circle Line "CityRingin" Project, Copenhagen Klaus W.H. Lund <i>The Metro Company</i> Deploying SetTrac CBTC to the World's Longest Driverless System – Dubai's Red & Green Lines Mircea Georgescu <i>Thales Rail Signaling Solutions</i>		New Connectivity Concepts Moderator: William Sproule, Ph.D., P.E., EASCE <i>Michigan Tech University</i> Sustainability, PRT and Parking Shannon Sanders McDonald AIA <i>Architect</i> Open-Guideway Personal Rapid Transit Station Options Peter Muller, P.E. <i>PRT Consulting, Inc.</i> Introducing PRT to the Sustainable City Robbert Lohmann <i>2getthere</i> Luca Guala <i>Systematica</i> Connecting Development Districts: Downtown to Clearwater Beach Ken Sides, P.E., PTOE, AICP, M.ASCE <i>City of Clearwater</i>		Vehicles (Session 1) Moderator: David Mori, BSME, MSEM, P.E. <i>Jakes Associates, Inc.</i> An Enhanced Bombardier CX-100 APM Vehicle Jack Galanko Scott Moore <i>Bombardier Transportation</i> Advanced Composite Carbody Systems Takaomi Inada <i>Structural Analysis Group</i> Genichirou Nagahara Tsutomu Hoshii Masaaki Kuwabara <i>IHI Corporation</i> Seung-Cheol Lee Dae-Hwan Kim <i>Hankuk Fiber Glass Co., Ltd.</i>	

3:00 pm – 3:30 pm **Refreshment Break in the Exhibit Hall, Atlanta Ballroom, 7th Floor**

Monday, June 1, 2009



3:30 pm – 5:00 pm

Concurrent Technical Session 2, Peachtree Ballroom, 8th Floor

Track 1	Airport Experiences	Track 2	Urban Metro Applications	Track 3	Major Activity Centers	Track 4	System Improvements
Peachtree D		Peachtree C		Peachtree B		Peachtree E	
<p>Atlanta Hartsfield Airport</p> <p>Moderator: Jack Norton, M.ASCE. <i>Lea+Elliott, Inc.</i></p> <p>APM Systems – The Key to Atlanta Airport Expansion John Kapala <i>HJ Development Program Atlanta</i></p> <p>Expanding the APM System at Atlanta Airport Gregory Adams Frank Jeffers Thomas Sheakley <i>Bombardier Transportation</i></p> <p>Planning and Integration – MHJIT at Atlanta Airport Sambit Bhattacharjee, P.E. <i>Lea+Elliott, Inc.</i></p> <p>John Kapala <i>HJ Development Program Atlanta</i></p> <p>Mike Williams <i>MHJIT</i></p> <p>The MHI Crystal Mover at Atlanta Airport Darin Friedmann <i>Mitsubishi Heavy Industries America</i></p>		<p>Expanding APM to Urban Applications</p> <p>Moderator: Trip Belote <i>DCC Doppelmayr Cable Car</i></p> <p>Urban APM Systems Santiago Ruan Sardi <i>DCC Doppelmayr Cable Car</i></p> <p>MiniMetro Perugia –The World’s First Detachable Grip, Cable Driven APM Rick Spear <i>Leitner-Poma of America</i></p> <p>Integration of Guided Cabin Systems (GCS) in Cities, Regardless of their Size Ortfried Friedreich <i>AXIS Ingenieurleistungen</i></p>		<p>Developing Technologies</p> <p>Moderator: Robbert Lohmann <i>2getthere</i></p> <p>VECTUS PRT Concept and Test Track Experience Jörgen Gustafsson, M.SC., M.B.A. Svante Lennartsson <i>Vectus Ltd.</i></p> <p>Operating Record and Recent Developments of HSST Hitashi Motoyama, MSME <i>Mitsubishi Heavy Industries</i></p> <p>Development Status of the General Atomics Urban Maglev System Husam (Sam) Gurol, Ph.D. <i>Electromagnetic Systems Division, General Atomics</i></p>		<p>Financing</p> <p>Moderator: Lawrence Fabian, M ASCE <i>Trans.21</i></p> <p>Project Funding Opportunities Sanjeev Shah, P.E, M.ASCE Larry Coleman <i>Lea+Elliott Inc.</i></p> <p>Financing Transit Usage with Podcars in 59 Swedish Cities Göran Tegnér, M.Sc.Econ Elisabet Idar Angelov, M.Sc.Econ <i>WSP Group</i></p> <p>The APM Impact on Property Value David Little, AICP <i>Lea+Elliott Inc.</i></p>	

6:00 pm – 9:30 pm

Lea+Elliott, Inc., Dinner Reception, Transportation Departs from Hotel Motor Entrance

Every four years, we look forward to the Monday night networking event hosted by Lea+Elliott, Inc. It is a great opportunity to re-unite with old friends and get to know new friends and business associates. This year, we will travel a short distance to Buckhead (uptown Atlanta) for a Low Country Barbecue dinner and fine refreshments at the SweetWater Brewing Company. Lea+Elliott is pleased to invite all registered conference attendees to join us for this event along with one guest. Although tickets are complimentary, attendees and guests must register and receive a ticket for the event.

Sponsored by **Lea+Elliott**

CONFERENCE PROGRAM

Tuesday, June 2, 2009

8:30 am – 10:00 am			
Concurrent Technical Session 3, Peachtree Ballroom, 8th Floor			
Track 1	Track 2	Track 3	Track 4
Airport Experiences	Urban Metro Applications	Major Activity Centers	System Improvements
<i>Peachtree D</i>	<i>Peachtree C</i>	<i>Peachtree B</i>	<i>Peachtree E</i>
<p>Miami International Airport</p> <p>Moderator: Darin Friedmann <i>Mitsubishi Heavy Industries America</i></p> <p>MIA Mover Procurement Sanjeev Shah, P.E, M.ASCE Larry Coleman <i>Lea+Elliott Inc.</i></p> <p>Margaret Hawkins Moss Franklin Stirrup, P.E. <i>Miami-Dade Aviation Department</i></p> <p>MIA Mover APPM: A Fixed Facility Design/Build Perspective Barbara M Schroeder, P.E. <i>Rail & Transit Systems Division, PARSONS</i></p> <p>MHI Crystal Movers at Miami International Airport Makoto Kashiwa <i>Mitsubishi Heavy Industries America</i></p>	<p>APMs in Urban Settings (Session 1)</p> <p>Moderator: Michael Fetsko <i>Bombardier Transportation</i></p> <p>Guangzhou – First Urban APM in China Rob DeCostro <i>Bombardier Transportation</i></p> <p>DBOM to DBFO: The Longer and More Winding Road Thomas Dunscombe, CE <i>San Francisco BART</i></p> <p>Elaine Cartwright, BSEE Harley Moore, MSCE, MIT John Kennedy <i>Lea+Elliott, Inc.</i></p> <p>APM Feasibility Study for the Vienna Central Station Development Area Heimo Krappinger, CE <i>AXIS Ingenieurleistungen</i></p> <p>Simulation Analysis of APM Systems in Dense Urban Environments, Part 1: Transit User Experience J. Sam Lott, P.E., M.ASCE Douglas Gettman, Ph.D. David S. Tau <i>Kimley-Horn and Associates</i></p>	<p>APMs on Campus</p> <p>Moderator: Stanley Young, Ph.D., P.E. <i>Center for Advanced Trans Tech, University of Maryland</i></p> <p>Introducing APMs into a University Curriculum William Sproule, Ph.D.P.E., FASCE William Leder, P.E., FASCE <i>Michigan Tech University</i></p> <p>California University Of Pennsylvania (CALU) Urban Maglev Sky Shuttle Thomas Riestler, P.E. <i>Mackin Engineering Company</i></p> <p>Husam (Sam) Gurol, Ph.D. <i>Electromagnetic Systems Division, General Atomics</i></p> <p>A Campus Transportation System for Michigan Tech William Leder, P.E., FASCE Frank Baxandall, P.E. William Sproule, Ph.D.,P.E., FASCE <i>Michigan Tech University</i></p> <p>Implementing an APM for CityCenter - The New Vertical City in Las Vegas Huy Huynh, P.E. Sebastian Gladney <i>Lea+Elliott, Inc.</i></p> <p>Brian Packer <i>MGM Mirage Design Group</i></p>	<p>Guideways (Session 1)</p> <p>Moderator: Jim Fletcher, P.E., FASCE <i>Parametrix</i></p> <p>Guideway Design and Construction Brian K. Adams, P.E. John A. Heath,P.E. Gary B. Lineback, P.E. <i>Heath & Lineback Engineers, Inc.</i></p> <p>The Orlando Experience Todd Mitchell, P.E. <i>Structures, PB</i></p> <p>Orlando International Airport Running Surface Rehabilitation - Airsides 1,3 Sambit Bhattacharjee, P.E. Daniel McFadden , P.E. <i>Lea+Elliott, Inc.</i></p> <p>Tuan Nguyen, P.E. <i>Greater Orlando Airport Authority</i></p>

10:00 am – 1:30 pm

Exhibit Hall Open, Atlanta Ballroom, 7th Floor

10:00 am – 10:30 am

Refreshments in Exhibit Hall, Atlanta Ballroom, 7th Floor



Tuesday, June 2, 2009

10:30 am – 12:00 pm		Concurrent Technical Session 4, Peachtree Ballroom, 8th Floor					
Track 1	Airport Experiences	Track 2	Urban Metro Applications	Track 3	Major Activity Centers	Track 4	System Improvements
Peachtree D		Peachtree C		Peachtree B		Peachtree E	
<p>Heathrow & Dulles Airports</p> <p>Moderator: Harley Moore, BSCE, MSCE <i>Lea+Elliot, Inc.</i></p> <p>London Heathrow Terminal 5 APM Project Glenn Morgan, BSME <i>Bombardier Transportation</i></p> <p>An Update on the Progress of the Heathrow Airport PRT Project David Holdcroft, BSc MBA <i>Heathrow Airport</i></p> <p>The Dulles Airport Aerotrain: the MHI Crystal Mover Goes to Washington Michael Ang <i>Mitsubishi Heavy Industries America</i></p> <p>Deploying the "Light" SelTrac CBTC Solution at Dulles International Airport APM Scott VanHorn <i>Thales Rail Signaling Solutions</i></p>		<p>APMs in Urban Settings (Session 2)</p> <p>Moderator: Joe Marchese, P.E. <i>Burns Engineering Co.</i></p> <p>Rubber Tired APM - A Better Solution for Honolulu Rapid Transit? David Mori, BSME, MSEM, P.E. <i>Jakes Associates, Inc.</i></p> <p>Planning and Procurement of the Doha, West-Bay APM Kamel-Eddine Mokhtech, Ph. D., P.E. Sanjeev Shah, P.E, M.ASCE <i>Lea+Elliot, Inc.</i></p> <p>Hassan Eisa M. Al-Fadala, Ph.D. Ghanim Hassan Al-Ibrahim Hassan Qaddoura, P.E. <i>Qatari Diar Real Estate Investment Company</i></p> <p>Simulation Analysis of APM Systems in Dense Urban Environments, Part 2: System Operations J. Sam Lott, P.E., M.ASCE Douglas Gettman, Ph.D. David S. Tau <i>Kimley-Horn and Associates</i></p> <p>Las Vegas People Mover Integration Potential Wayne D. Cottrell, Ph.D., P.E. <i>Advanced Transit Association</i></p>		<p>APMs in Developments</p> <p>Moderator: Robert Dunning <i>ATRA</i></p> <p>PRT Case Study at Village West Development, Kansas City, Kansas Stanley Young, P.E. <i>Center for Advanced Trans Tech, University of Maryland</i></p> <p>Peter Muller, P.E. <i>PRT Consulting</i></p> <p>Moni El-Aasar <i>BG Consultants</i></p> <p>Dean Landman, P.E., LTR, P.A. Steven Schrock, Ph.D. <i>University of Kansas</i></p> <p>Personal Rapid Transit's Impact on Army Base Sustainability Peter Muller, P.E. <i>PRT Consulting</i></p> <p>PRT Circulator for Pleasanton and Perimeter Center Steve Raney <i>Advanced Transport Systems</i></p> <p>APM Application for Freight Transportation Albert W. Hartkom <i>Transit Safety Consulting Services</i></p> <p>Bob Griebenow, P.E., S.E., M.ASCE <i>BergerABAM</i></p>		<p>Guideways (Session 2)</p> <p>Moderator: Bill Parrish <i>Schwager Davis</i></p> <p>Guideways – The Need to Cost Less and Look Better Bob Griebenow, P.E., S.E., M.ASCE, <i>BergerABAM</i></p> <p>Jim Fletcher, P.E., FASCE <i>Parametrix</i></p> <p>Heathrow PRT Guideway, Lessons Learned Tony Kerr, BE, MSc, CEng, MICE Rachel Oates, MEng, MICE, MIStructE <i>Ove Arup & Partners Ltd</i></p> <p>How to Design a PRT Guideway J. Edward Anderson, P.E. <i>PRT International, LLC</i></p>	

12:00 pm – 1:30 pm

Lunch in the Exhibit Hall, Atlanta Ballroom, 7th Floor

Included for Full, Student & Tuesday Daily Registrants Additional Tickets: \$50

Sponsored by



1:30 pm – 5:00 pm

APM Site Tour – Hartsfield-Jackson Atlanta International Airport

Explore the APM at Hartfield-Jackson Atlanta International Airport.

Ticket Required: \$10. Transportation departs promptly from Hotel Motor Entrance.

Sponsored by



CONFERENCE PROGRAM

Wednesday, June 3, 2009

Subject to change

8:30 am – 10:00 am

Concurrent Technical Session 5, Peachtree Ballroom, 8th Floor

Track 1	Airport Experiences	Track 2	Urban Metro Applications	Track 3	Major Activity Centers	Track 4	System Improvements
Peachtree D		Peachtree C		Peachtree B		Peachtree E	
<p>Airport O&M</p> <p>Moderator: John Champ <i>Crystal Mover Services, Inc.</i></p> <p>Operations and Maintenance at Atlanta Airport Melvin Redd Russell Woodley Jerome Page, MBA <i>Bombardier Transportation</i></p> <p>DFW Skylink: Tracking Success David Taliaferro, BBA <i>Dallas Fort Worth Int'l Airport</i></p> <p>O'Hare ATS - The Teenage Years Dennis Gary, P.E., Ph.D. Mark Piltingsrud, AIA <i>AECOM Technical Services</i></p>		<p>System Safety</p> <p>Moderator: Sanjeev Shah, P.E, M.ASCE <i>Lea+Elliott, Inc.</i></p> <p>Objectively Assessing Automatic vs. Manual Control for Transit Systems John Joy, AIA <i>Lea+Elliott, Inc.</i></p> <p>IEC 62267 – A Safety Standard for Driverless Systems Anselme Cote <i>RATP</i></p> <p>Evolving Clark County APM Requirements David Mori, P.E. Eric Troy <i>Jakes Associates, Inc.</i></p>		<p>PRT Capabilities</p> <p>Moderator: Martin Lowson <i>Advanced Transport Systems</i></p> <p>The Need for High Capacity PRT Standardization Raymond MacDonald <i>21st Century PRT</i></p> <p>Ridesharing in Personal Rapid Transit Capacity Planning John Lees-Miller <i>University of Bristol</i></p> <p>John Hammersley Nick Davenport <i>Advanced Transport Systems</i></p> <p>Extending PRT Capabilities Ingmar Andreasson, Ph.D. <i>LogistikCentrum</i></p> <p>Wireless Communication Based Computer Simulator to Assess the Operational Scenarios for the Personal Rapid Transit Systems Jun-Ho Lee Yong-Kyu Kim <i>Korea Railroad Research Institute</i></p>		<p>Vehicles (Session 2)</p> <p>Moderator: Barry Vaughn <i>Advanced Application Design</i></p> <p>Energy Efficient APM Using High Performance Batteries Masaya Mitake Hiroshi Ogawa, PE, M.ASCE, M.JSME Katsuaki Morita <i>Mitsubishi Heavy Industries</i></p> <p>Eco-Industrial Design for CityVAL, Siemens' New AGT Redjean Clerc <i>Siemens Transportation Systems</i></p> <p>Advances in Passenger Convenience and Comfort Kunihiro Tatecho Masafumi Kawai Yuji Koike Motoaki Tanaka Masaaki Kuwabara Tsutomu Hoshii <i>IHI Corporation</i></p>	

10:00 am – 10:30 am

Refreshment Break, Peachtree Foyer



Wednesday, June 3, 2009

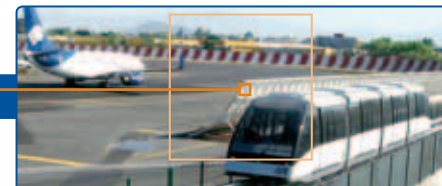
10:30 am – 12:00 pm				Concurrent Technical Session 6, Peachtree Ballroom, 8th Floor			
Track 1	Airport Experiences	Track 2	Urban Metro Applications	Track 3	Major Activity Centers	Track 4	System Improvements
Peachtree D		Peachtree C		Peachtree B		Peachtree E	
<p>Airport APM R & D Projects, ACRP/TRB/ACI</p> <p><i>Contracts, Funding, Administration & Results</i></p> <p>Moderator: Larry Smith, P.E., FASCE <i>Chair, ASCE APM Standards Committee</i></p> <p>Panelists: Dick Marchi <i>Technical Affairs ACI/NA</i></p> <p>Larry Goldstein <i>Senior Program Advisor, TRB/ACRP</i></p> <p>David Little, AICP <i>ACRP Project Leader, Lea+Elliott, Inc.</i></p> <p>Belinda Hargrove <i>ACRP Project Leader TransSolutions</i></p>		<p>Converting to Driverless Operation</p> <p>Moderator: Gerard Yelloz <i>Siemens Transportation Systems</i></p> <p>Automation of Existing Metro Lines – The Case of RATP Line 1 François Platel <i>RATP</i></p> <p>A Flexible Turnkey Platform Concept for Metros of the Future Bertrand Picard, ENSTA, STS <i>Siemens Transportation Systems</i></p> <p>Integrated Solutions of APM Operation Effectiveness Mircea Georgescu <i>Thales Rail Signaling Solutions</i></p>		<p>APM Standards Overview</p> <p><i>New Release of Part 4, ASCE 21</i></p> <p>Moderator: Tom McGeen, P.E., FASCE <i>Past Chair, ASCE APM Standards Committee</i></p> <p>Panelists: Security Mike Riseborough <i>Toronto Pearson Airport</i></p> <p>Emergency Preparedness William Leder, P.E., FASCE <i>Michigan Tech University</i></p> <p>System Verification and Demonstration Charles Elms <i>APM Consultant</i></p> <p>Operations, Maintenance and Training William Showalter <i>APM Consultant</i></p> <p>Operational Monitoring Diane Morse <i>Federal Aviation Administration</i></p>		<p>Operation Improvements</p> <p>Moderator: Richard Prell <i>Conductix</i></p> <p>System Demonstration: Preparing for Success Matthew Sturgell, P.E. <i>Lea+Elliott, Inc.</i></p> <p>Optimizing APM Failure-mode Capacities James W. Green, P.E. <i>AECOM Transportation</i></p> <p>New Technology Integration for Older System Technologies Steven M. Castaneda, BSME, P.E. <i>Jakes Associates, Inc.</i></p> <p>Design and Economic Considerations for Power Rail Kevin Jensen, P.E. <i>Conductix</i></p>	

12:00 pm – 1:30 pm

Closing Lunch, Peachtree A, 8th Floor

Join us for lunch and the opportunity to applaud those judged to have provided the “Best Papers and/or Presentations” of the Conference.

Ticket Required: \$35



COMMITTEE MEETINGS

Sunday, May 31

- 2:00 pm – 5:00 pm TRB APM Meeting,
Tower 1201, 12th Floor
- 3:30 pm – 4:30 pm TD&I APM Committee Meeting
Tower 1205, 12th Floor
- 4:30 pm – 5:30 pm Steering Committee Meeting
Tower 1206, 12th Floor

Tuesday, June 2

- 6:00 pm – 9:00 pm International Airport APM
Association Meeting
Tower 1207, 12th Floor

Wednesday, June 3

- 2:00 pm – 6:00 pm APM Standards Committee
Meeting, *International D, 6th Floor*

CONFERENCE DETAILS

In order to apply for the Professional Development Hours (PDHs) to which you are entitled for your participation in APM09, you will need to complete and submit the PDH form that is in your on-site registration packet. Please follow the directions on the form.

Please note that there are differences from state to state in continuing education requirements for professional engineering licensure. Each state registration board has the final authority to approve courses, credits, professional development hours per course, and other

methods of earning credit in that state. ASCE strongly recommends that individuals check regularly with their state registration boards for specific continuing education requirements in their jurisdictions that

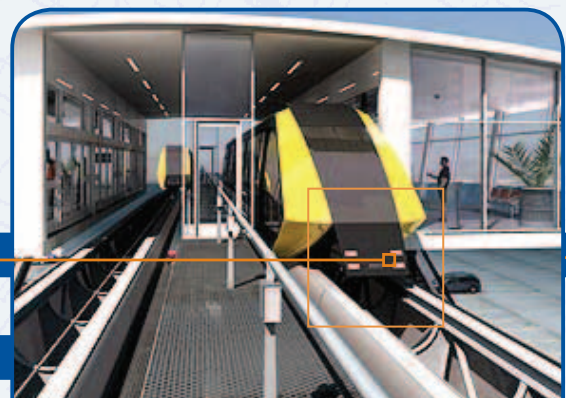
affect professional engineering licensure and the ability to renew licensure.

Conference Proceedings

Conference proceedings will be provided to Full Conference Registrants. Additional copies may be purchased following the Conference by calling ASCE at 800-548-2723 or 703-295-6300 or ordering online at www.pubs.asce.org.

Speaker/Moderator Information

All speakers and session moderators are required to register in advance for the Conference and pay appropriate registration fees. All pre-registered moderators will find moderator packets in their conference registration materials. These packets will include speakers' biographies and a copy of the moderator guidelines.



Speakers' Preparation Room

Peachtree E, 8th Floor

A Speakers' Room will operate:

Monday 7:00 am – 4:00 pm

Tuesday 7:00 am – 12:00 pm

Wednesday 7:00 am – 10:30 am

Speakers who are making computer-generated presentations must bring their own computers or arrange with the session moderator to share usage of a computer. TD&I is unable to provide computers for use during the technical sessions.

Lunch and Refreshment Breaks

Refreshments breaks will be offered in the Exhibit Hall mid-morning on Monday and Tuesday and mid-afternoon on Monday.

Complimentary Buffet lunches in the Exhibit Hall on Monday and Tuesday are included in Full, Student and Daily-Monday or Daily-Tuesday Registrations.

On Wednesday, a ticketed seated luncheon will be served. **Tickets are required for this lunch for \$35 per person.**

Information/Message Center

Messages for Conference attendees may be placed through the Westin Peachtree Plaza Hotel at 404-659-1400. Please ask for the APM09 Registration Desk.

Faxes to guests may be sent to: 404-589-7424. Be sure to indicate very clearly on the cover sheet the attendee's full name. If the attendee is not staying at the Westin Peachtree Plaza, write: "Please deliver to the APM09 Conference Registration Desk," on the cover sheet.

Conference Dress

Business casual attire is appropriate for most APM09 events. Although jackets are not required for the sessions, they are advisable because conference rooms are typically cool.

Local Customs

Tips: Service charges or tips are generally not included in published prices in the United States. Restaurant servers, taxi drivers, etc. generally expect a tip of at 15%.

Smoking: Smoking in public areas is usually prohibited in the United States. Smokers should seek out designated smoking areas in hotels, restaurants and other businesses.



HOTEL INFORMATION

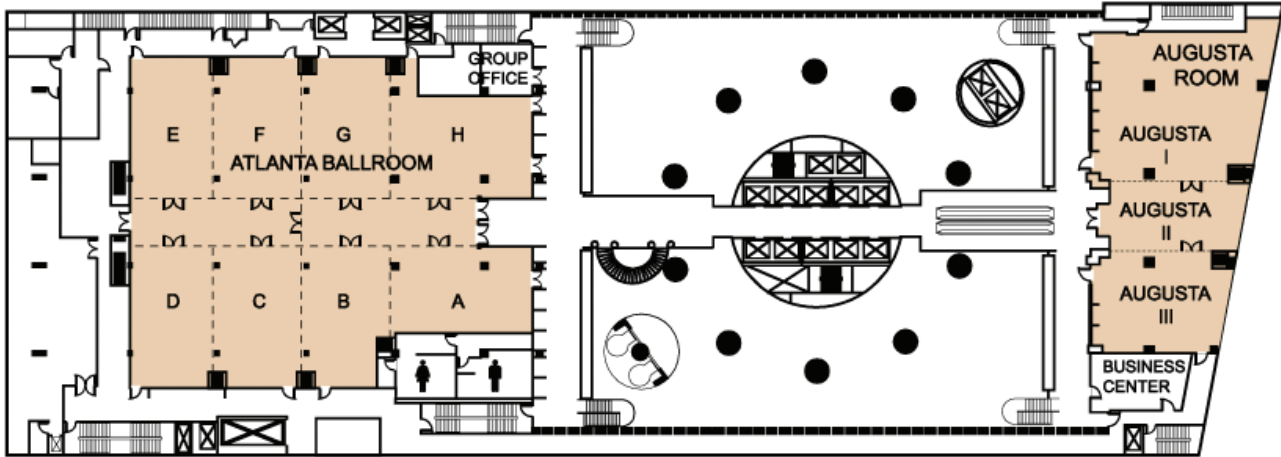


Westin Peachtree Plaza Hotel

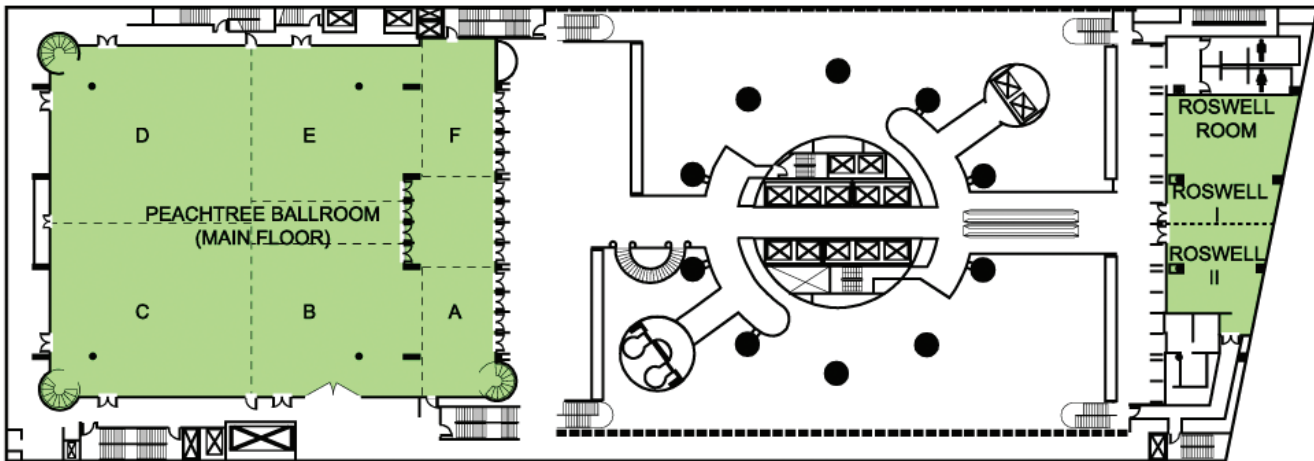
210 Peachtree Street

Atlanta GA 30303

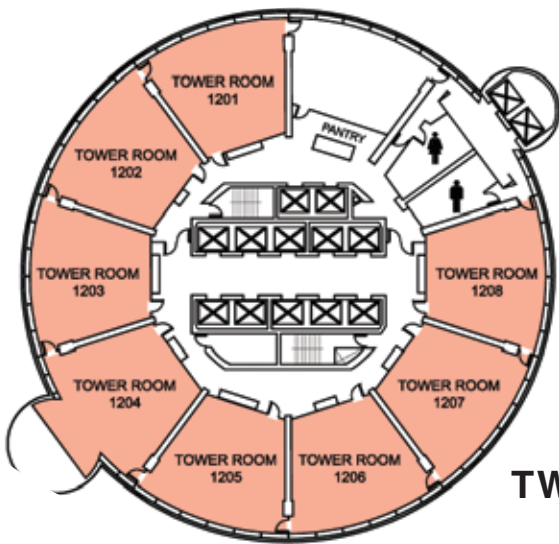
Phone: 404-659-1400 • Fax: 404-589-7424



SEVENTH FLOOR



EIGHTH FLOOR



TWELFTH FLOOR

PROGRAM-AT-A-GLANCE

Registration: *Peachtree Foyer*

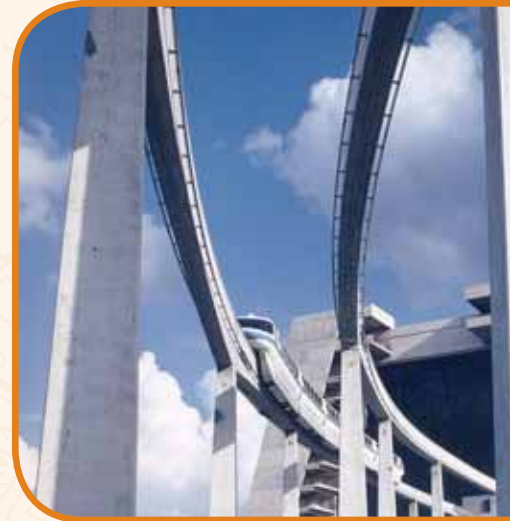
Subject to change

Sunday, May 31

- 12:00 pm – 6:00 pm Registration, *Peachtree Foyer*
6:00 pm – 7:30 pm Icebreaker Reception, *Atlanta Ballroom*

Monday, June 1

- 7:00 am – 4:00 pm Registration, *Peachtree Foyer*
8:30 am – 10:00 am Conference Welcome and Opening Session, *Peachtree Ballroom*
10:00 am – 10:30 am Coffee Break in Exhibit Hall, *Atlanta Ballroom*
10:30 am – 12:00 pm Panel Discussion – APMs in Airports, *Peachtree Ballroom*
12:00 pm – 1:30 pm Lunch in Exhibit Hall, *Atlanta Ballroom*
1:30 pm – 3:00 pm Concurrent Technical Sessions, *Peachtree Ballroom*
3:00 pm – 3:30 pm Refreshment Break in Exhibit Hall, *Atlanta Ballroom*
3:30 pm – 5:00 pm Concurrent Technical Sessions, *Peachtree Ballroom*
6:00 pm – 9:30 pm Lea+Elliott, Inc., Dinner Reception *Transportation from hotel to SweetWater Brewing Company*



Tuesday, June 2

- 7:00 am – 2:00 pm Registration, *Peachtree Foyer*
8:30 am – 10:00 am Concurrent Technical Sessions, *Peachtree Ballroom*
10:00 am – 10:30 am Coffee Break in Exhibit Hall, *Atlanta Ballroom*
10:30 am – 12:00 pm Concurrent Technical Sessions, *Peachtree Ballroom*
12:00 pm – 1:30 pm Lunch in Exhibit Hall, *Atlanta Ballroom*
1:30 pm – 5:00 pm Automated People Mover Tours

Wednesday, June 3

- 7:00 am – 1:00 pm Registration, *Peachtree Foyer*
8:30 am – 10:00 am Concurrent Technical Sessions, *Peachtree Ballroom*
10:00 am – 10:30 am Coffee Break, *Peachtree Foyer*
10:30 am – 12:00 pm Concurrent Technical Sessions, *Peachtree Ballroom*
12:00 pm – 1:30 pm Closing Luncheon, *Peachtree A*



TRANSPORTATION & DEVELOPMENT INSTITUTE SUSTAINING CORPORATE MEMBER

Fenstermaker & Associates



CONFERENCE SPONSORS

as of 4/21/09

Major Sponsor

Lea+Elliot

Lea+Elliot, Inc.
www.leaelliott.com
Dinner Reception

Excellence Sponsors

BOMBARDIER

Bombardier Transportation
www.bombardier.com
Monday Lunch & Conference Gifts



SUMITOMO
CORPORATION
OF AMERICA



Sumitomo Corporation of America and
Mitsubishi Heavy Industries of America, Inc. (MHIA)
www.sumitomocorp.com
www.mitsubishi-today.com
Icebreaker Reception and Technical Tours

CONFERENCE COOPERATING ORGANIZATIONS

as of 4/30/09

Advanced Transit Association
Airports Council International - NA
American Public Transportation Association
Institution of Civil Engineers
International Air Rail Organisation
International Airport APM Association

Silver Sponsors



Doppelmayr Cable Car
www.dcc.at
Monday Continental Breakfast



Gannett Fleming Inc.
www.gannettfleming.com
Tuesday Lunch



Leitner-Poma of America, Inc.
www.leitner-poma.com
Tuesday Lunch

Bronze Sponsor



Advanced Transit Association
Registration Bags

Brass Sponsor



BergerABAM
Paper Awards

Donor Sponsors

Conductix-Wampfler
Paper Award
CWA Constructions SA/Corp.
Paper Award